

## 2005 Kia Sedona LX

2005 KIA Sedona

2005 KIA

Sedona

## BUZZERS, RELAYS & TIMERS

### BUZZERS, RELAYS & TIMERS LOCATION

Component	Location
A/CON Relay	In engine compartment fuse/relay box. See <b><u>Fig. 13</u></b> .
AUX Relay	At right rear of vehicle. See <b><u>Fig. 27</u></b> .
Back Warning Buzzer	Behind left end of dash. See <b><u>Fig. 33</u></b> .
Cooling Fan Relay (Low)	In engine compartment fuse/relay box. See <b><u>Fig. 13</u></b> .
Cooling Fan Relay No. 1 (High)	In engine compartment fuse/relay box. See <b><u>Fig. 13</u></b> .
Cooling Fan Relay No. 2 (High)	In engine compartment fuse/relay box. See <b><u>Fig. 13</u></b> .
Defroster Relay	In engine compartment fuse/relay box. See <b><u>Fig. 43</u></b> .
DRL Relay	Below center of dash. See <b><u>Fig. 22</u></b> .
EBD & Warning Relay	At left rear side of engine compartment. See <b><u>Fig. 38</u></b> .
Front Blower Relay	In engine compartment fuse/relay box. See <b><u>Fig. 26</u></b> .
Front Fog Lamp Relay	In engine compartment fuse/relay box. See <b><u>Fig. 21</u></b> .
Fuel Pump Relay	In engine compartment fuse/relay box. See <b><u>Fig. 5</u></b> .
Hazard Relay	Below center of dash. See <b><u>Fig. 23</u></b> .
Headlight Relay (High)	In engine compartment fuse/relay box. See <b><u>Fig. 19</u></b> .
Headlight Relay (Low)	In engine compartment fuse/relay box. See <b><u>Fig. 19</u></b> .
Horn Relay	In engine compartment fuse/relay box. See <b><u>Fig. 24</u></b> .
Main Relay	In engine compartment fuse/relay box. See

## 2005 Kia Sedona LX

2005 KIA Sedona

	<b>Fig. 4 .</b>
Power Window Relay	In engine compartment fuse/relay box. See <b>Fig. 34 .</b>
Rear Blower Relay	At right rear side of vehicle. See <b>Fig. 27 .</b>
Start Relay	In engine compartment fuse/relay box. See <b>Fig. 3 .</b>
Wiper & Washer Relay (Rear)	In back door. See <b>Fig. 17 .</b>

## CIRCUIT PROTECTION DEVICES

### CIRCUIT PROTECTION DEVICES LOCATION

Component	Location
Engine Compartment Fuse/Relay Box	At left side of engine compartment.
Junction Block	Behind left side of dash.

## CONTROL UNITS

### CONTROL UNITS LOCATION

Component	Location
ABS Control Unit	At left rear of engine compartment. See <b>Fig. 38 .</b>
Air Bag Control Unit	At lower center of dash, on floor tunnel. See <b>Fig. 42 .</b>
AIRCON Control Unit	Center of dash. See <b>Fig. 25 .</b>
Auto Light Control Unit	Behind center of dash. See <b>Fig. 20 .</b>
Back Warning Unit	In rear of vehicle. See <b>Fig. 33 .</b>
Cruise Control Unit	At right rear of engine compartment. See <b>Fig. 41 .</b>
DRL Unit	Below center of dash. See <b>Fig. 22 .</b>
ETWIS	Below center of dash. See <b>Fig. 30 .</b>
Flasher Unit	Below center of dash. See <b>Fig. 23 .</b>
Immobilizer Unit	Below left side of dash. See <b>Fig. 45 .</b>
Keyless Entry Receiver	Behind lower right side of dash. See <b>Fig. 29 .</b>
Powertrain Control Module	Below center of dash. See <b>Fig. 4 .</b>
Sun Roof Unit	At front center of roof, in sun roof unit. See <b>Fig. 37 .</b>

**2005 Kia Sedona LX**

2005 KIA Sedona

Trip Computer

In overhead console. See **Fig. 44** .**MOTORS****MOTORS LOCATION**

<b>Component</b>	<b>Location</b>
Back Door Lock Motor	In back door. See <b>Fig. 35</b> .
Blower Motor (Front)	Behind right side of dash, on blower unit. See <b>Fig. 26</b> .
Blower Motor (Rear)	At right rear of vehicle, on blower unit. See <b>Fig. 27</b> .
Condenser Fan Motor	Behind right side of radiator. See <b>Fig. 13</b> .
Cooling Fan Motor	Behind left side of radiator. See <b>Fig. 13</b> .
Front Door Lock Motor (Left)	In left front door. See <b>Fig. 35</b> .
Front Door Lock Motor (Right)	In right front door. See <b>Fig. 35</b> .
Front Washer Motor	At right front of engine compartment. See <b>Fig. 17</b> .
Front Wiper Motor	On right side of firewall. See <b>Fig. 17</b> .
Fuel Lid Opener	Left rear of vehicle. See <b>Fig. 43</b> .
Intake Actuator (Front)	Behind right side of dash, on blower unit. See <b>Fig. 25</b> .
Intake Actuator (Rear)	At right rear of vehicle, on rear blower unit. See <b>Fig. 27</b> .
Mix Actuator	Behind center of dash, on bottom of HVAC unit. See <b>Fig. 26</b> .
Mode Actuator	Behind center of dash, on bottom of HVAC unit. See <b>Fig. 26</b> .
Power Mirror Motor & Defroster (Left)	On left front door. See <b>Fig. 36</b> .
Power Mirror Motor & Defroster (Right)	On right front door. See <b>Fig. 36</b> .
Power Seat & Seat Warmer (Driver's)	In driver's seat. See <b>Fig. 39</b> .
Power Seat & Seat Warmer (Passenger's)	In passenger's seat. See <b>Fig. 40</b> .
Power Window Motor (Left)	In left front door. See <b>Fig. 34</b> .
Power Window Motor (Right)	In right front door. See <b>Fig. 34</b> .
Quarter Glass Motor (Left)	Left rear of vehicle. See <b>Fig. 37</b> .
Quarter Glass Motor (Right)	Right rear of vehicle. See <b>Fig. 37</b> .
Rear Washer Motor	At rear of vehicle. See <b>Fig. 17</b> .

## 2005 Kia Sedona LX

2005 KIA Sedona

Rear Wiper Motor	At lower center of hatch. See <b>Fig. 17</b> .
Sliding Door Lock Motor (Left)	In left sliding door. See <b>Fig. 35</b> .
Sliding Door Lock Motor (Right)	In right sliding door. See <b>Fig. 35</b> .
Starter Motor	Left side of engine. See <b>Fig. 3</b> .
Sun Roof Motor (Unit)	At front center of roof, in sun roof unit. See <b>Fig. 37</b> .
Variable Intake Control Motor 1	At right front of engine. See <b>Fig. 9</b> .
Variable Intake Control Motor 2	At right front of engine. See <b>Fig. 9</b> .

## SENDING UNITS & SENSORS

### SENDING UNITS & SENSORS LOCATION

Component	Location
Air Flow Meter	At top rear of engine. See <b>Fig. 9</b> .
AMB Sensor	In front of condenser fan shroud. See <b>Fig. 26</b> .
Back Warning Sensor (Left)	On rear bumper. See <b>Fig. 33</b> .
Back Warning Sensor (Left Center)	On rear bumper. See <b>Fig. 33</b> .
Back Warning Sensor (Right)	On rear bumper. See <b>Fig. 33</b> .
Back Warning Sensor (Right Center)	On rear bumper. See <b>Fig. 33</b> .
Brake Fluid Level Sensor	On brake master cylinder reservoir assembly. See <b>Fig. 22</b> .
Camshaft Position Sensor	At front of engine. See <b>Fig. 5</b> .
Crankshaft Position Sensor	Next to crankshaft sprocket. See <b>Fig. 5</b> .
Engine Coolant Temperature Sensor	At rear of engine. See <b>Fig. 5</b> .
Fuel Temperature Sensor	Near top of fuel tank. See <b>Fig. 6</b> .
Ignition Failure Sensor	At top rear of engine. See <b>Fig. 7</b> .
Input Sensor	At top of transaxle. See <b>Fig. 10</b> .
Knock Sensor	At top rear of engine. See <b>Fig. 6</b> .
MAP Sensor	On intake manifold. See <b>Fig. 6</b> .
Output Sensor	At top of transaxle. See <b>Fig. 10</b> .
O2 Sensor (Front Left)	On left rear side of engine. See <b>Fig. 8</b> .
O2 Sensor (Front Right)	On right rear side of engine. See <b>Fig. 8</b> .
O2 Sensor (Rear Left)	On left rear side of engine. See <b>Fig. 8</b> .
O2 Sensor (Rear Right)	On right front side of engine. See <b>Fig. 8</b> .



## 2005 Kia Sedona LX

2005 KIA Sedona

Rain Sensor	At center front of roof. See <b>Fig. 18</b> .
Speed Sensor	On top of transaxle. See <b>Fig. 14</b> .
Tank Pressure Sensor	Near top of fuel tank. See <b>Fig. 6</b> .
Thermistor	Behind center of dash, on HVAC unit. See <b>Fig. 25</b> .
Throttle Position Sensor	On throttle body. See <b>Fig. 6</b> .
Wheel Speed Sensors (Front)	On respective front steering knuckle. See <b>Fig. 38</b> .
Wheel Speed Sensors (Rear)	On respective rear brake backing plate. See <b>Fig. 38</b> .

## SOLENOIDS & SOLENOID VALVES

### SOLENOIDS & SOLENOID VALVES LOCATION

Component	Location
A/T Solenoid Valve	On transaxle housing. See <b>Fig. 10</b> .
Fuel Lid Opener	Left rear of vehicle. See <b>Fig. 43</b> .
Idle Speed Actuator (ISA)	On throttle body. See <b>Fig. 5</b> .
Injector #1	On top of engine. See <b>Fig. 4</b> .
Injector #2	On top of engine. See <b>Fig. 4</b> .
Injector #3	On top of engine. See <b>Fig. 4</b> .
Injector #4	On top of engine. See <b>Fig. 4</b> .
Injector #5	On top of engine. See <b>Fig. 4</b> .
Injector #6	On top of engine. See <b>Fig. 4</b> .
Purge Solenoid Valve	At top rear of engine. See <b>Fig. 5</b> .
Purge Vent Solenoid	Under right rear of vehicle. See <b>Fig. 8</b> .

## SWITCHES

### SWITCHES LOCATION

Component	Location
Door Lock Switch (Right Front)	In right front door. See <b>Fig. 30</b> .
Driver Seat Belt Switch	In driver's seat belt buckle. See <b>Fig. 42</b> .
Front Door Switch (Left)	On left "B" pillar. See <b>Fig. 29</b> .
Front Door Switch (Right)	On right "B" pillar. See <b>Fig. 29</b> .
Glove Box Switch	Right side of glove box. See <b>Fig. 31</b> .

**2005 Kia Sedona LX**

2005 KIA Sedona

Keyless Switch	On steering column. See <b>Fig. 29</b> .
Oil Pressure Switch	At front of engine. See <b>Fig. 15</b> .
Parking Brake Switch	At base of parking brake lever. See <b>Fig. 22</b> .
Passenger Seat Belt Switch	In passenger's seat belt buckle. See <b>Fig. 42</b> .
Power Steering Switch	At right front of engine. See <b>Fig. 6</b> .
Sliding Door Switch (Left)	In front of left rear wheel. See <b>Fig. 29</b> .
Sliding Door Switch (Right)	In front of right rear wheel. See <b>Fig. 29</b> .
Stop Light Switch	Above brake pedal, on bracket. See <b>Fig. 24</b> .
Transaxle Range Switch	On transaxle. See <b>Fig. 3</b> .
Triple Pressure Switch	On top of A/C receiver-drier assembly. See <b>Fig. 7</b> .
Two Turn Lock Switch	In left front door. See <b>Fig. 35</b> .

**MISCELLANEOUS****MISCELLANEOUS LOCATION**

<b>Component</b>	<b>Location</b>
Antenna Coil	On steering column. See <b>Fig. 45</b> .
A/T Change Lever	Behind center of dash. See <b>Fig. 11</b> .
Condenser	At top left side of engine. See <b>Fig. 7</b> .
Data Link Connector	At left side of engine compartment. See <b>Fig. 46</b> .
Diode	Behind left side of dash. See <b>Fig. 22</b> .
Driver Air Bag	On steering wheel. See <b>Fig. 42</b> .
DRL Resistor	Right side of engine compartment. See <b>Fig. 22</b> .
EVA & Blower Unit	Behind right side of dash. See <b>Fig. 26</b> .
Generator	Left front of engine. See <b>Fig. 3</b> .
Heater Unit (Front)	Behind center of dash. See <b>Fig. 26</b> .
Heater Unit (Rear)	Right rear of vehicle. See <b>Fig. 27</b> .
Horn (Left & Right)	In front of radiator. See <b>Fig. 24</b> .
Ignition Coil 1	Top left side of engine. See <b>Fig. 7</b> .
Ignition Coil 2	Top left side of engine. See <b>Fig. 7</b> .
Ignition Coil 3	Top left side of engine. See <b>Fig. 7</b> .
Intake Unit	Behind center of dash. See <b>Fig. 25</b> .

## 2005 Kia Sedona LX

2005 KIA Sedona

OBD-II Check Connector	Behind left side of dash. See <b>Fig. 46</b> .
Passenger Air Bag	On right side of dash. See <b>Fig. 42</b> .
Pretensioner (Driver's)	Base of left "B" pillar. See <b>Fig. 42</b> .
Pretensioner (Passenger's)	Base of right "B" pillar. See <b>Fig. 42</b> .
Resistor (Front)	On bottom of blower unit. See <b>Fig. 26</b> .
Resistor (Rear)	At right rear of vehicle. See <b>Fig. 27</b> .

## CONNECTORS

### CONNECTORS LOCATION

Component	Location
X-02 (Yellow, 21 Pin)	At left side of engine compartment, near battery. See <b>Fig. 7</b> .
X-03 (Blue, 21 Pin)	At left side of engine compartment, near battery. See <b>Fig. 21</b> .
X-04 (Gray, 24 Pin)	Behind left side of dash. See <b>Fig. 14</b> .
X-05 (Black, 20 Pin)	Behind left side of dash. See <b>Fig. 14</b> .
X-06 (Black, 24 Pin)	Behind left side of dash. See <b>Fig. 16</b> .
X-07 (White, 24 Pin)	Behind left side of dash. See <b>Fig. 16</b> .
X-08 (White, 20 Pin)	Behind right front of center console. See <b>Fig. 6</b> .
X-09 (Black, 23 Pin)	Under steering column. See <b>Fig. 17</b> .
X-10 (White, 6 Pin)	Under center console. See <b>Fig. 42</b> .
X-12 (White, 24 Pin)	Behind left side of dash. See <b>Fig. 12</b> .
X-13 (White, 16 Pin)	Behind left side of dash. See <b>Fig. 12</b> .
X-14 (Black, 20 Pin)	At left side of engine compartment, near brake master cylinder. See <b>Fig. 3</b> .
X-15 (White, 30 Pin)	Behind left end of dash. See <b>Fig. 28</b> .
X-16 (White, 30 Pin)	Behind right end of dash. See <b>Fig. 32</b> .
X-17 (Black, 8 Pin)	Behind left taillight assembly. See <b>Fig. 24</b> .
X-18 (White, 8 Pin)	Near left taillight. See <b>Fig. 30</b> .
X-19 (White, 4 Pin)	Top left side of tailgate. See <b>Fig. 30</b> .
X-20 (White, 8 Pin)	At top left side of tailgate. See <b>Fig. 17</b> .
X-21 (White, 20 Pin)	At left side of roof panel, near "B" pillar. See <b>Fig. 28</b> .

## 2005 Kia Sedona LX

2005 KIA Sedona

X-22 (Gray, 16 Pin)	At right rear of engine compartment. See <b>Fig. 5</b> .
X-23 (Black, 16 Pin)	At right rear of engine compartment. See <b>Fig. 3</b> .
X-24 (Black, 4 Pin)	At top of engine. See <b>Fig. 4</b> .
X-25 (Black, 6 Pin)	At top rear of cylinder head. See <b>Fig. 7</b> .

## GROUND S

### GROUND S LOCATION

Component	Location
G1	Behind right headlight. See <b>Fig. 1</b> .
G2	Behind right headlight. See <b>Fig. 1</b> .
G3	Behind left headlight. See <b>Fig. 1</b> .
G4	Behind left headlight. See <b>Fig. 1</b> .
G5	At left side of engine compartment, near battery. See <b>Fig. 1</b> .
G6	At left side of engine compartment, under battery. See <b>Fig. 1</b> .
G7	At left side of engine compartment, under battery. See <b>Fig. 1</b> .
G8	Under center console. See <b>Fig. 1</b> .
G9	Under center console. See <b>Fig. 1</b> .
G10	Behind left end of dash. See <b>Fig. 2</b> .
G11	Behind left end of dash. See <b>Fig. 2</b> .
G12	Behind right end of dash. See <b>Fig. 2</b> .
G13	Behind right end of dash. See <b>Fig. 2</b> .
G14	Behind left side of dash. See <b>Fig. 2</b> .
G15	Under steering column. See <b>Fig. 2</b> .
G16	Behind center of dash. See <b>Fig. 2</b> .
G17	Behind center of dash. See <b>Fig. 2</b> .
G18	Behind center of dash. See <b>Fig. 2</b> .
G19	Behind center of dash. See <b>Fig. 2</b> .
G20	Behind right taillight assembly. See <b>Fig. 2</b> .
G21	Behind right taillight assembly. See <b>Fig. 2</b> .

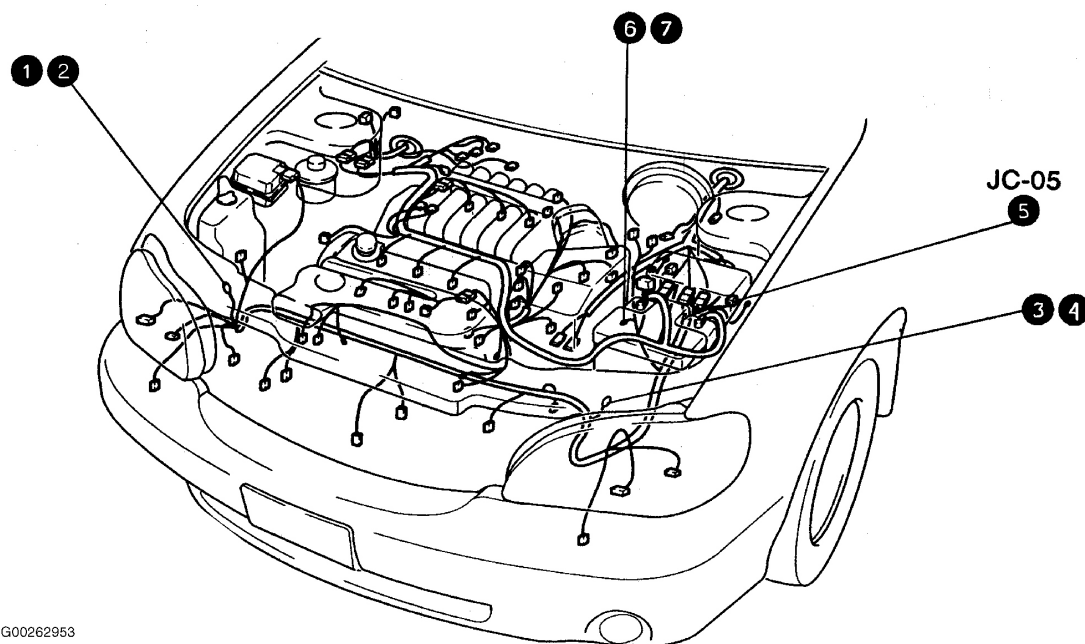
## 2005 Kia Sedona LX

2005 KIA Sedona

G22	Behind left taillight assembly. See <b>Fig. 2</b> .
G23	Behind left taillight assembly. See <b>Fig. 2</b> .
G24	On left fender. See <b>Fig. 2</b> .
G25	On rear of engine. See <b>Fig. 2</b> .
G27	At left rear of cargo area. See <b>Fig. 2</b> .
G28	At left rear of cargo area. See <b>Fig. 2</b> .

### COMPONENT LOCATION GRAPHICS

**NOTE:** Figures may show multiple component locations. Refer to appropriate table for proper figure references

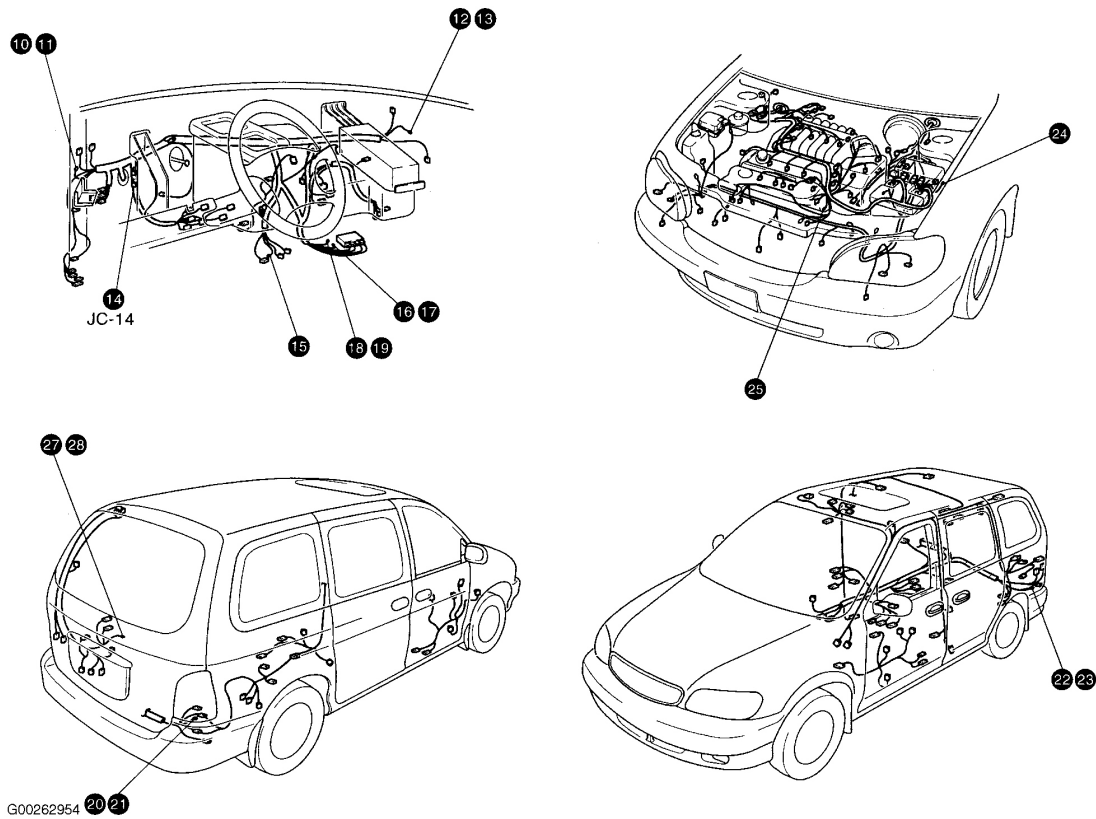


G00262953

**Fig. 1: Ground Points**  
Courtesy of KIA MOTORS AMERICA, INC.

## 2005 Kia Sedona LX

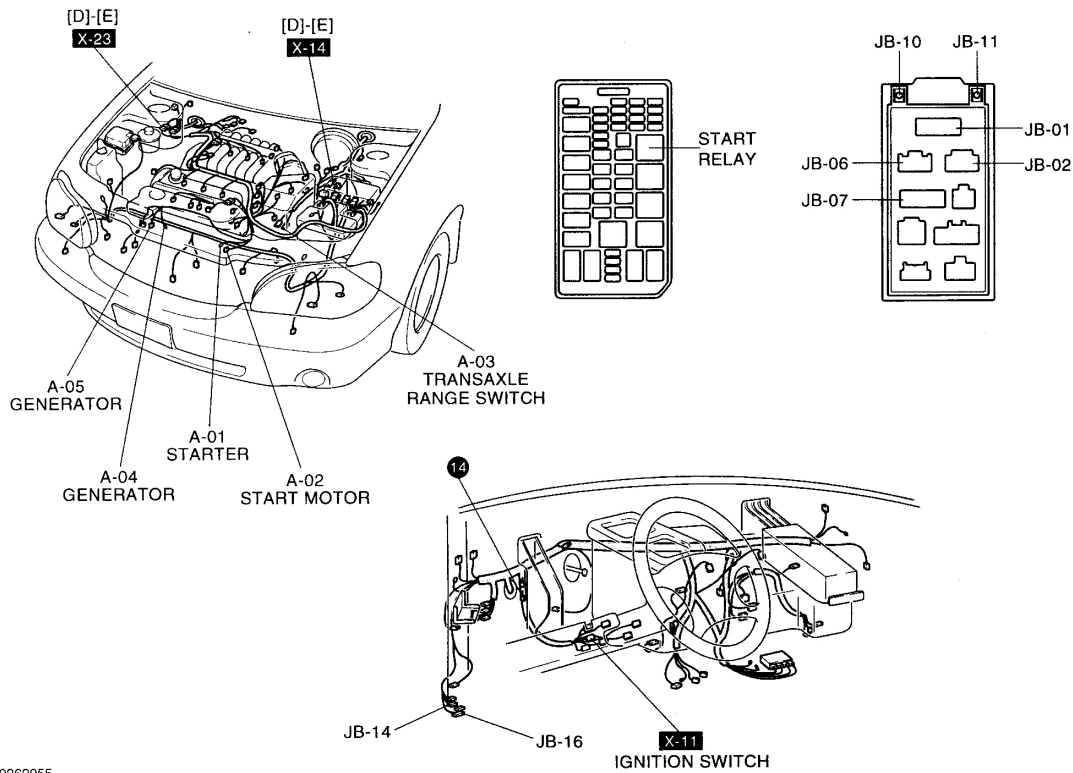
2005 KIA Sedona



**Fig. 2: Ground Points**  
**Courtesy of KIA MOTORS AMERICA, INC.**

## 2005 Kia Sedona LX

2005 KIA Sedona

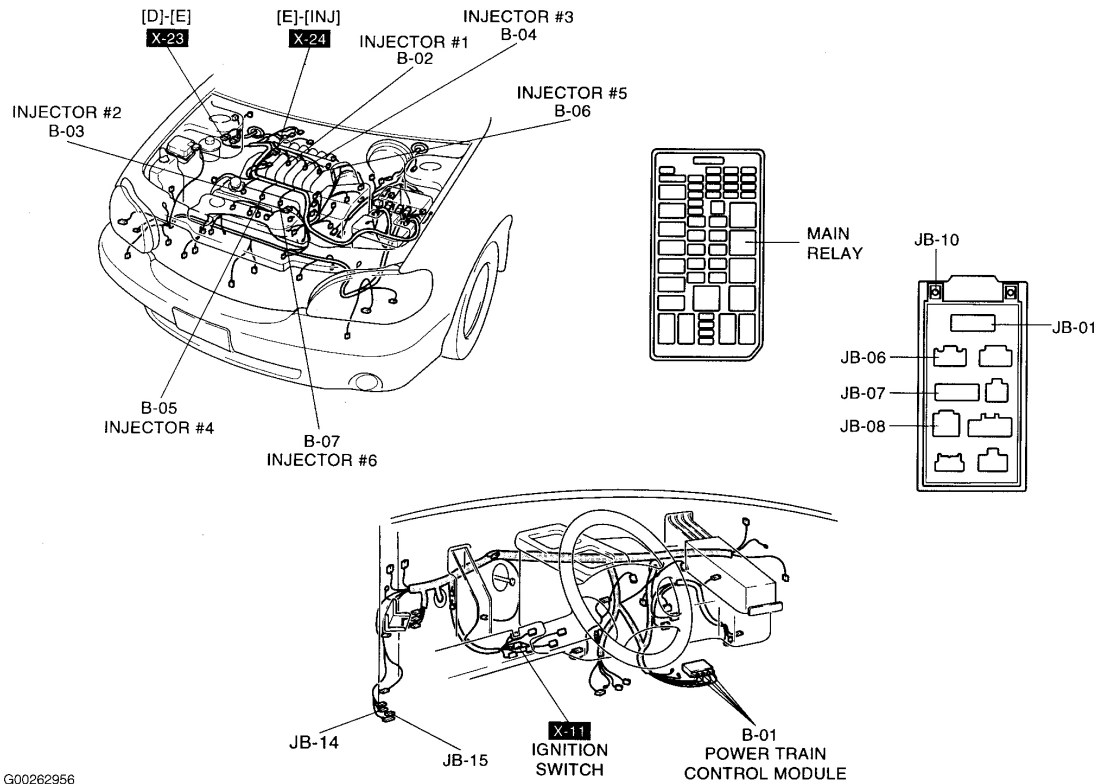


G00262955

**Fig. 3: Starting & Charging System**  
Courtesy of KIA MOTORS AMERICA, INC.

## 2005 Kia Sedona LX

2005 KIA Sedona



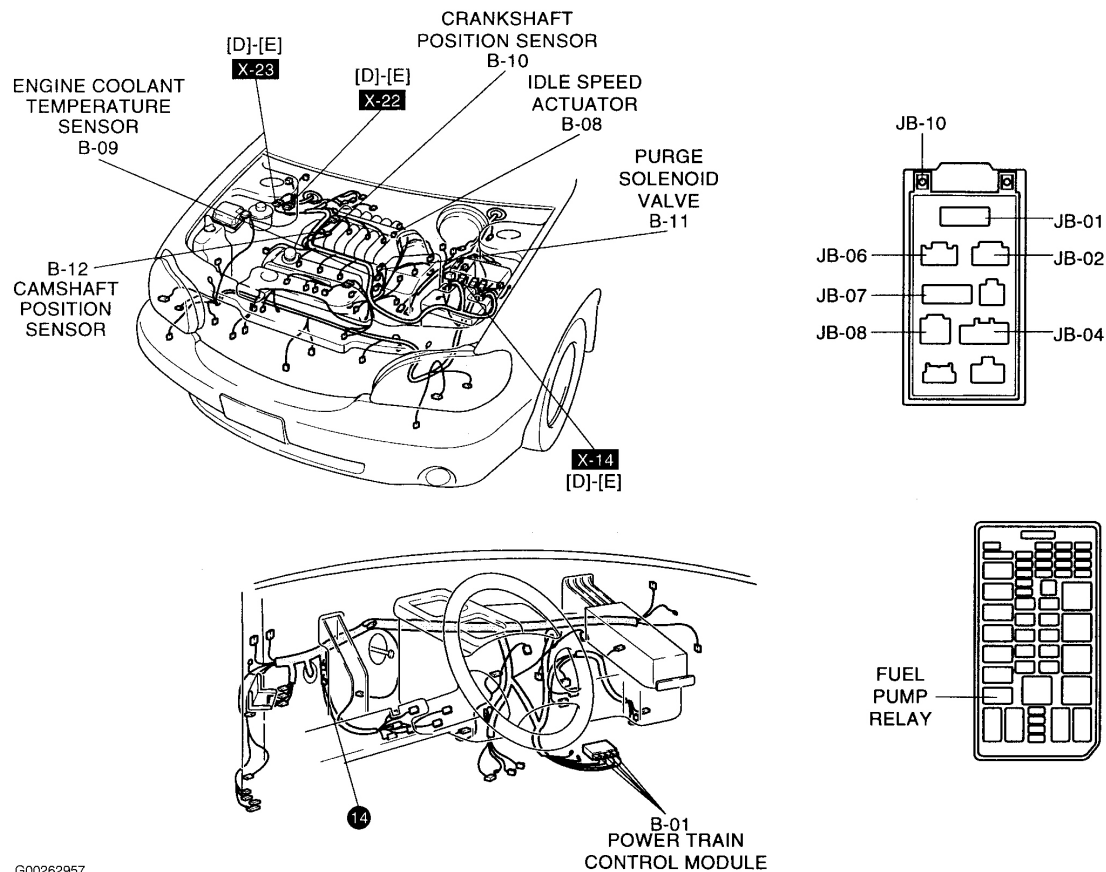
G00262956

**Fig. 4: Powertrain Control System**  
Courtesy of KIA MOTORS AMERICA, INC.



## 2005 Kia Sedona LX

2005 KIA Sedona

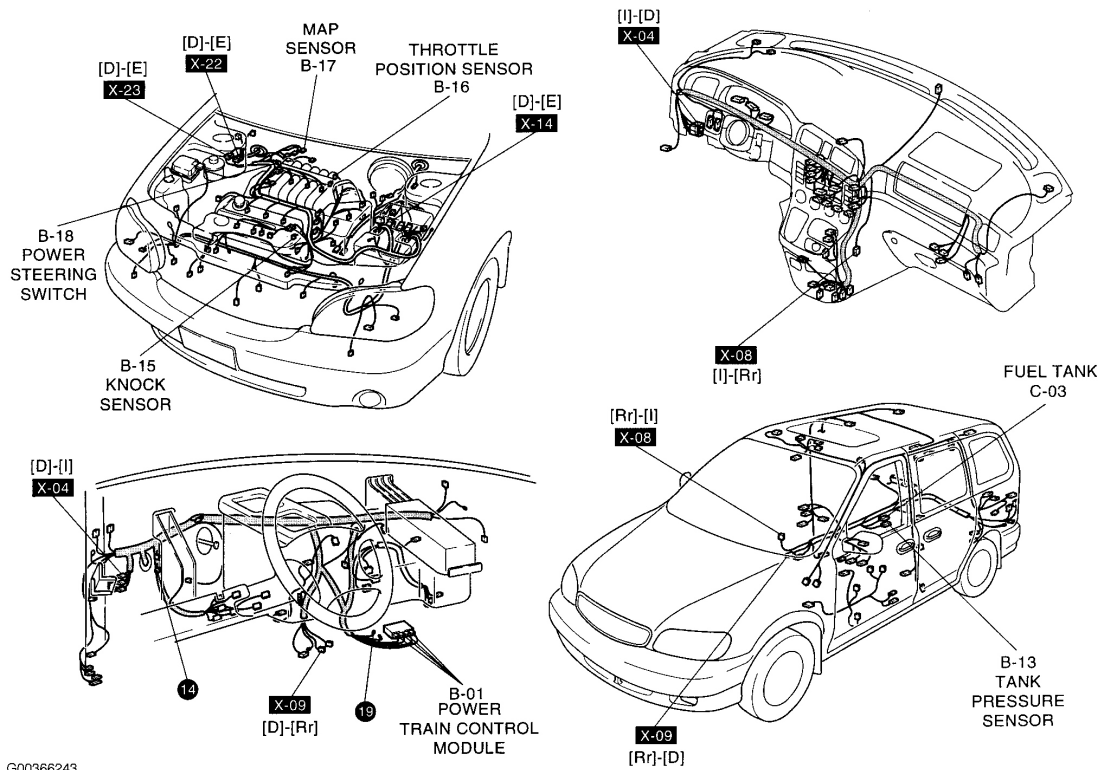


G00262957

**Fig. 5: Powertrain Control System**  
Courtesy of KIA MOTORS AMERICA, INC.

## 2005 Kia Sedona LX

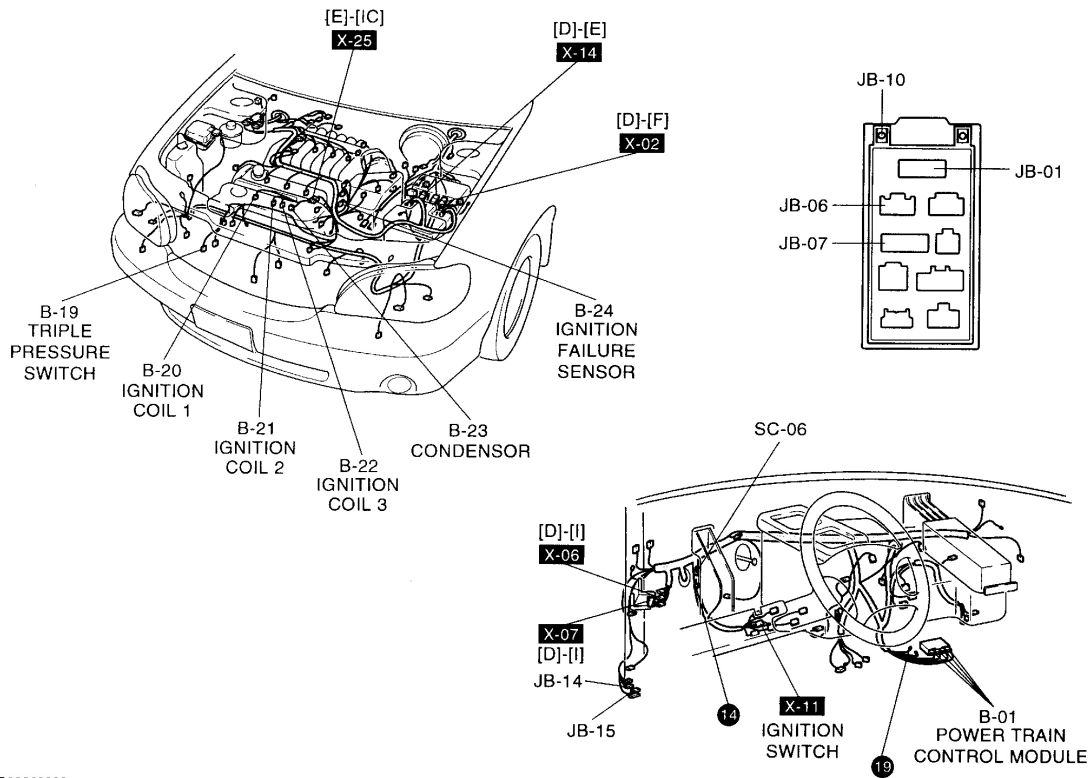
2005 KIA Sedona



**Fig. 6: Powertrain Control System**  
Courtesy of KIA MOTORS AMERICA, INC.

## 2005 Kia Sedona LX

2005 KIA Sedona

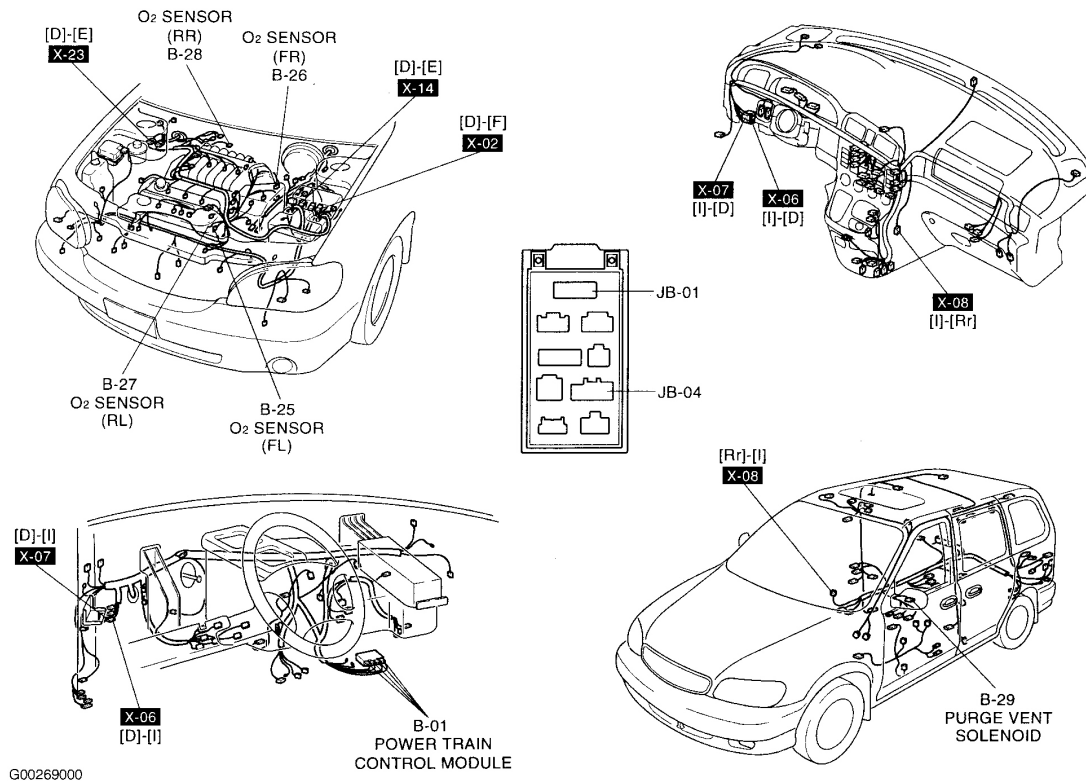


G00268999

**Fig. 7: Powertrain Control System**  
Courtesy of KIA MOTORS AMERICA, INC.

## 2005 Kia Sedona LX

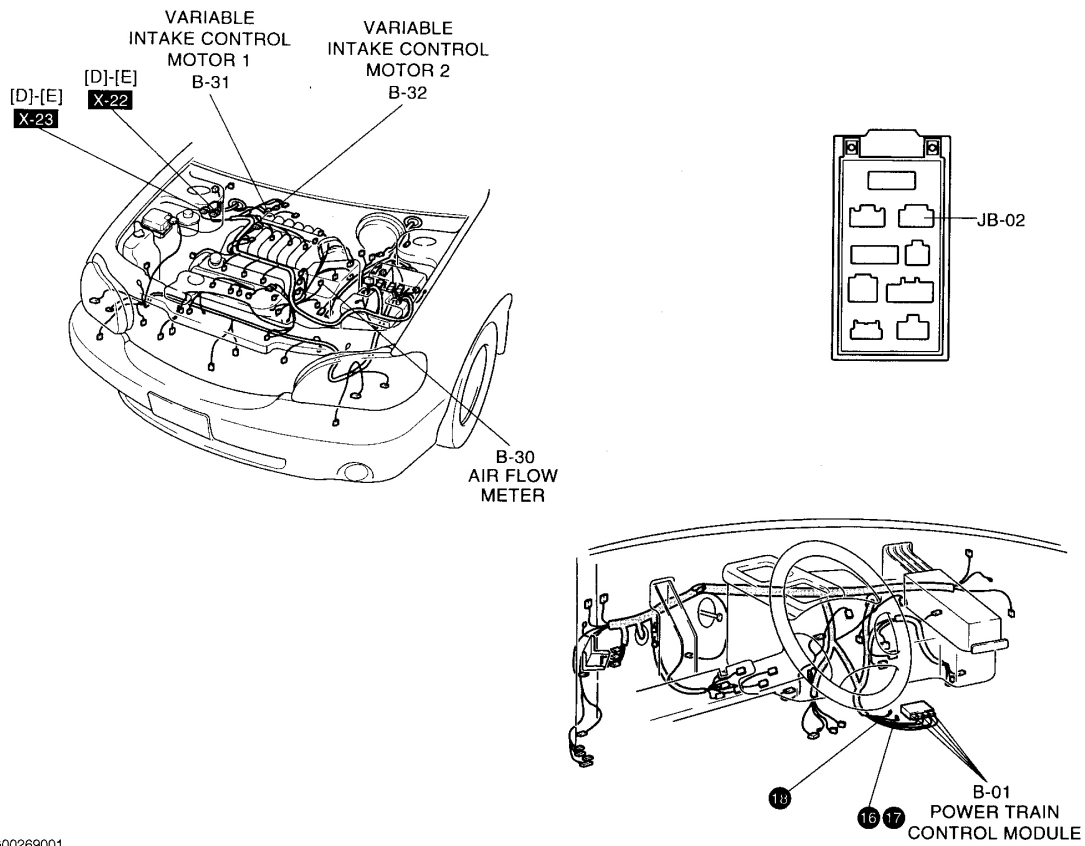
2005 KIA Sedona



**Fig. 8: Powertrain Control System**  
Courtesy of KIA MOTORS AMERICA, INC.

## 2005 Kia Sedona LX

2005 KIA Sedona

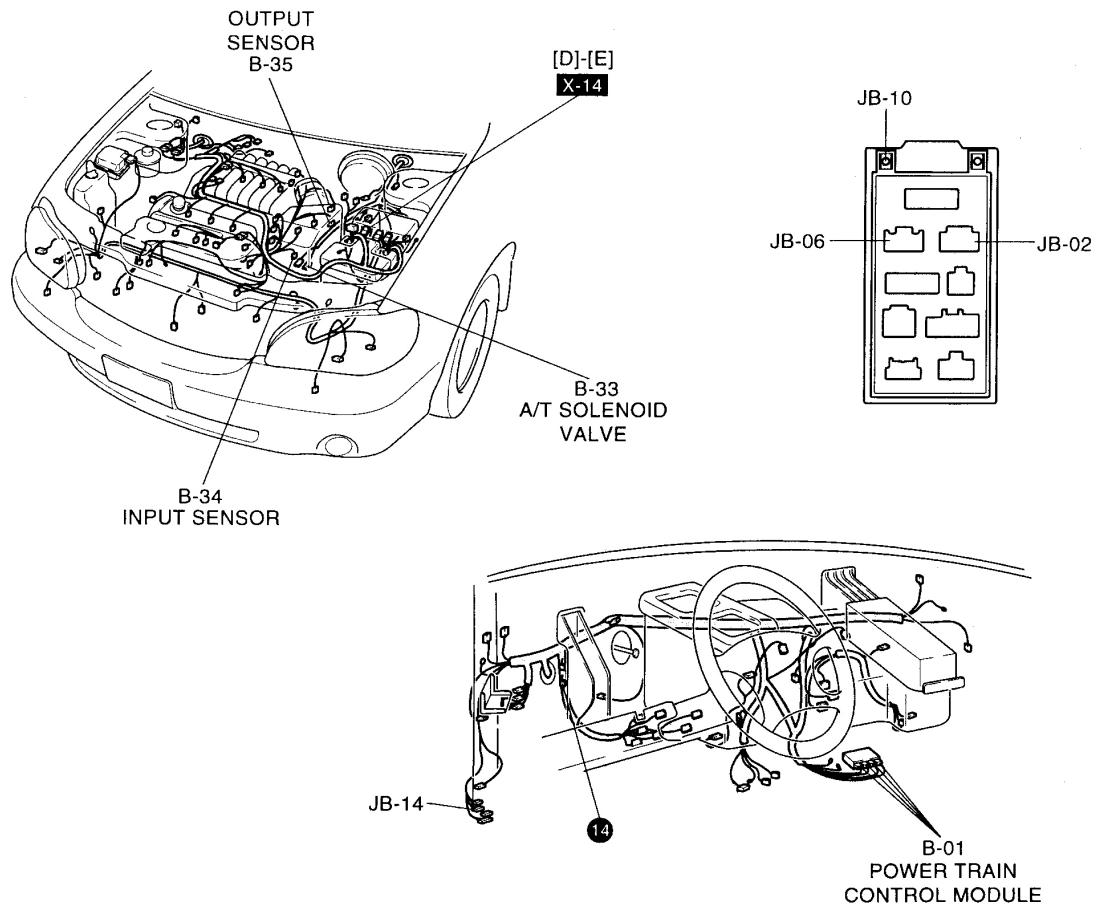


G00269001

**Fig. 9: Powertrain Control System**  
Courtesy of KIA MOTORS AMERICA, INC.

## 2005 Kia Sedona LX

2005 KIA Sedona

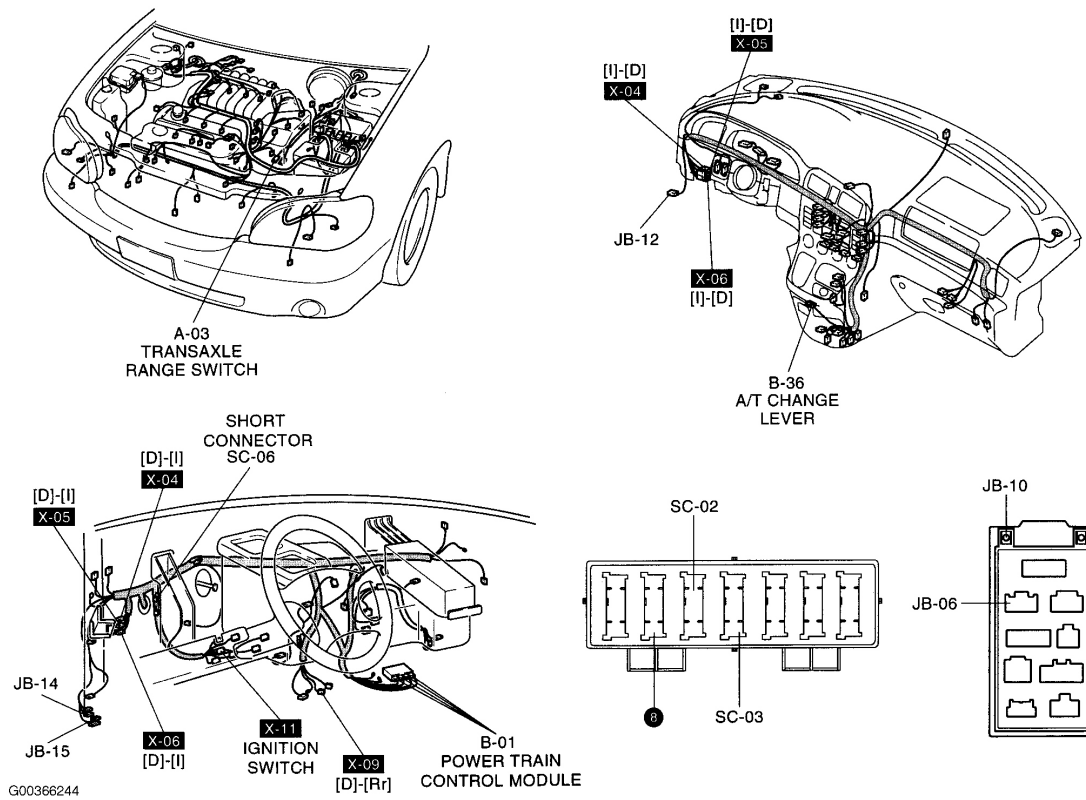


G00269002

**Fig. 10: Powertrain Control System**  
Courtesy of KIA MOTORS AMERICA, INC.

## 2005 Kia Sedona LX

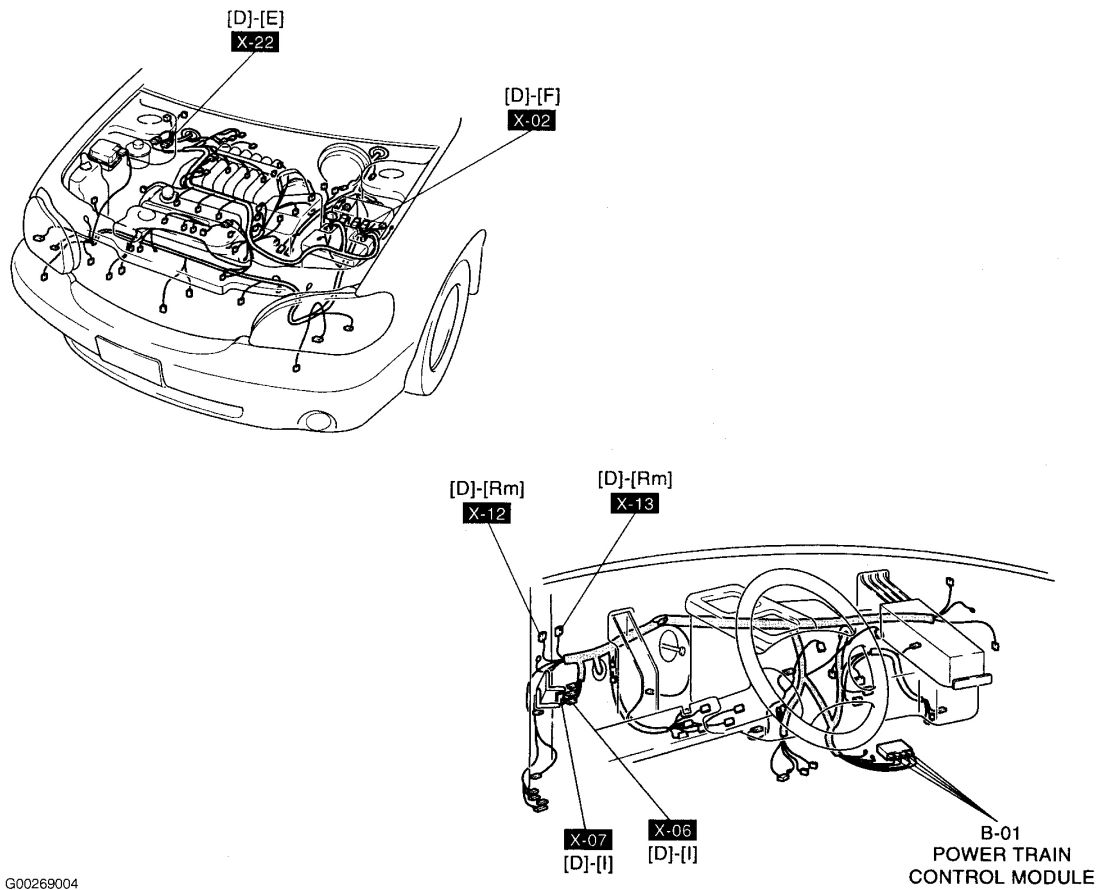
2005 KIA Sedona



**Fig. 11: Powertrain Control System**  
Courtesy of KIA MOTORS AMERICA, INC.

## 2005 Kia Sedona LX

2005 KIA Sedona



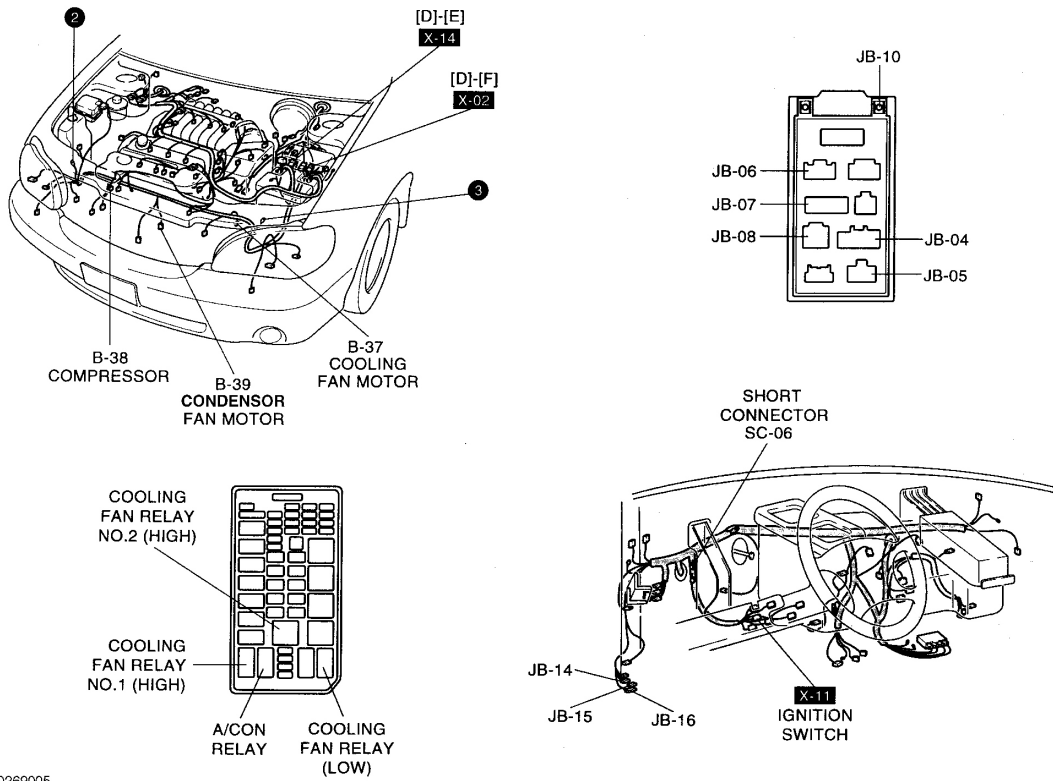
G00269004

**Fig. 12: Powertrain Control System**  
Courtesy of KIA MOTORS AMERICA, INC.



## 2005 Kia Sedona LX

2005 KIA Sedona



G00269005

**Fig. 13: Cooling System**  
Courtesy of KIA MOTORS AMERICA, INC.

<b>2005 Kia Sedona LX</b>
2005 KIA Sedona

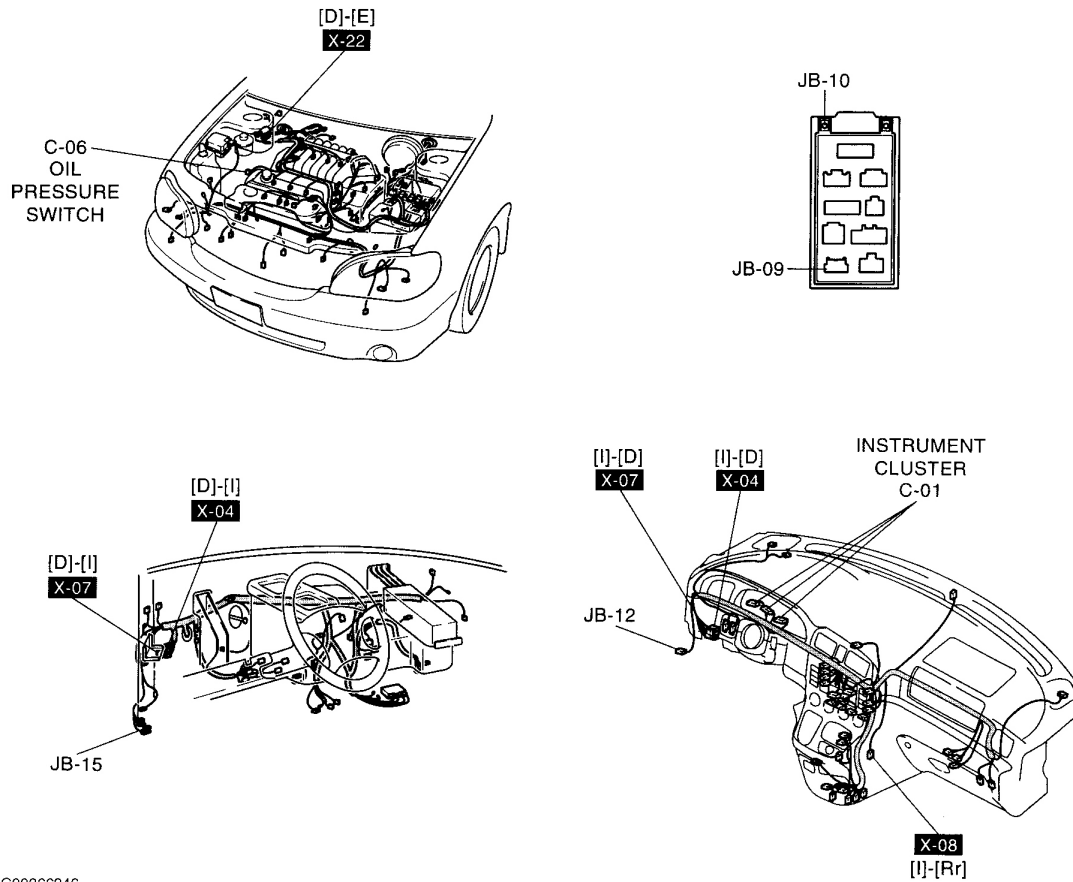
2005 KIA Sedona
-----------------



**Fig. 14: Instrument Cluster**  
Courtesy of KIA MOTORS AMERICA, INC.

## 2005 Kia Sedona LX

2005 KIA Sedona

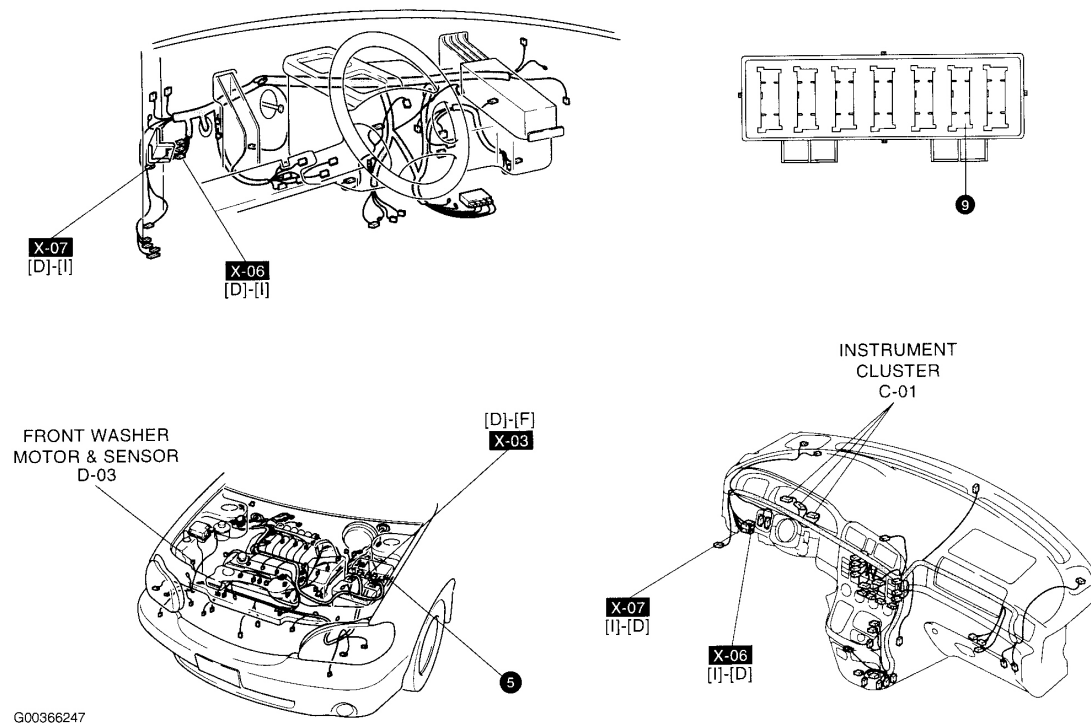


G00366246

**Fig. 15: Instrument Cluster**  
Courtesy of KIA MOTORS AMERICA, INC.

## 2005 Kia Sedona LX

2005 KIA Sedona



**Fig. 16: Instrument Cluster**  
Courtesy of KIA MOTORS AMERICA, INC.

2005 Kia Sedona LX
2005 KIA Sedona

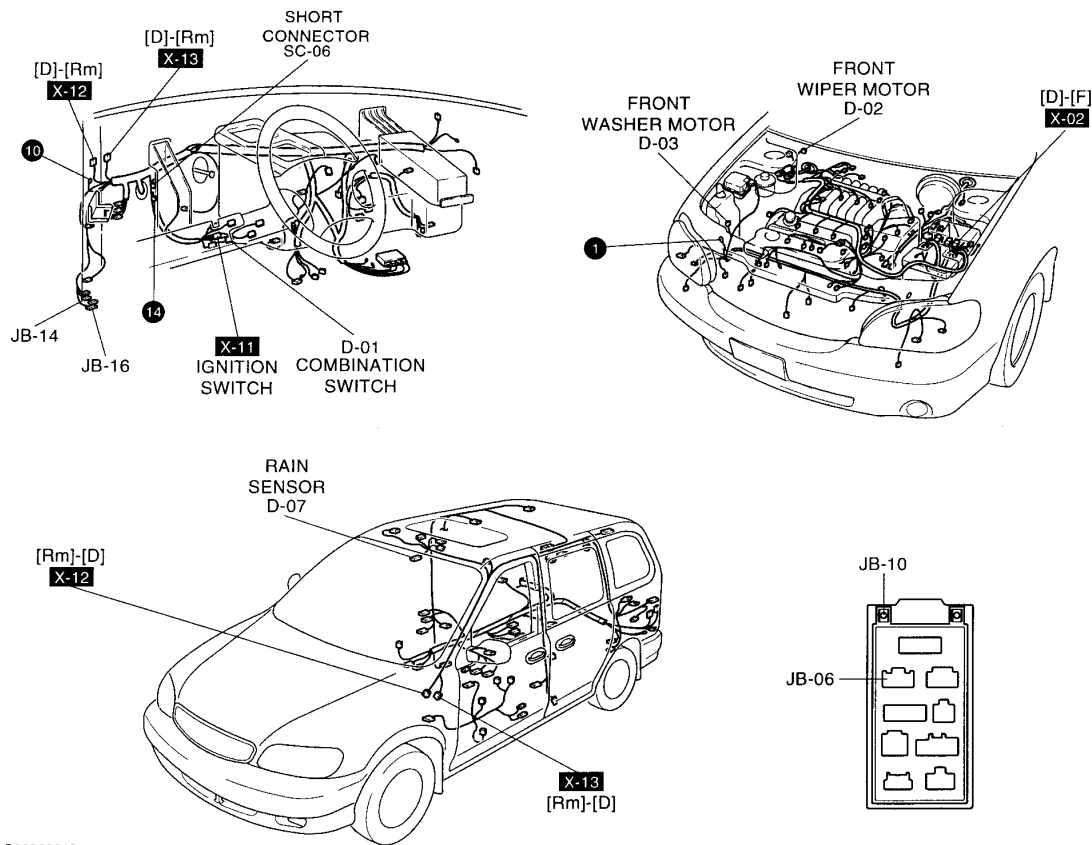
2005 KIA Sedona
-----------------



**Fig. 17: Wiper/Washer System**  
**Courtesy of KIA MOTORS AMERICA, INC.**

## 2005 Kia Sedona LX

2005 KIA Sedona

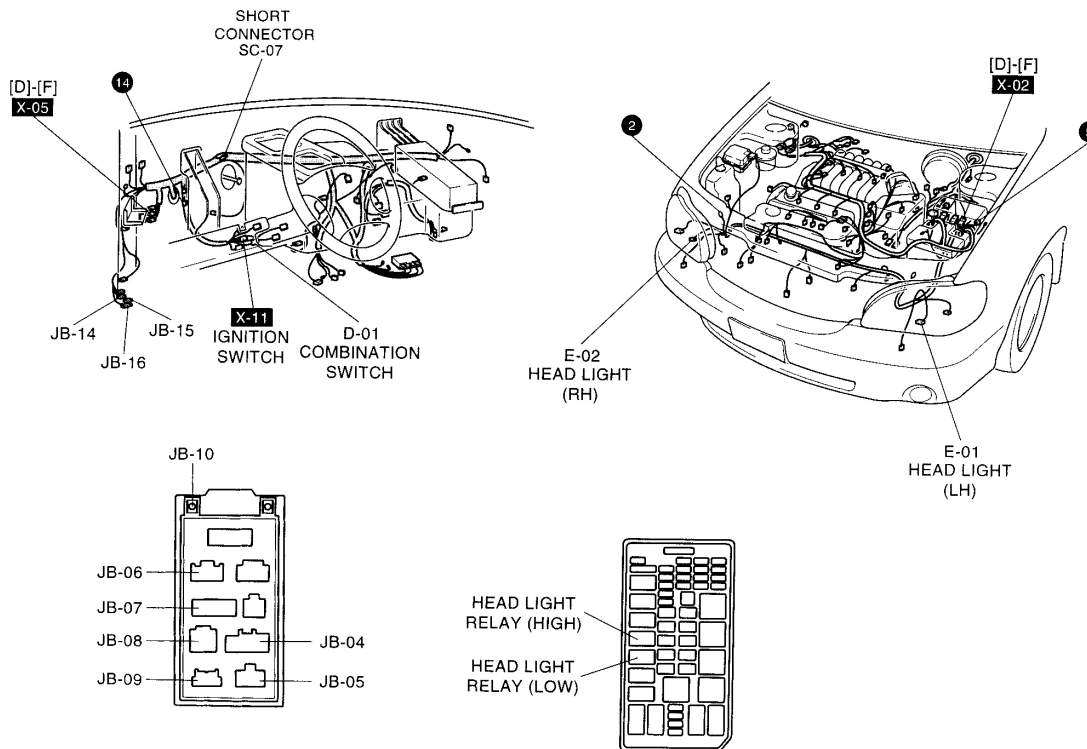


G00269010

**Fig. 18: Wiper/Washer System (Rain Sensor)**  
**Courtesy of KIA MOTORS AMERICA, INC.**

## 2005 Kia Sedona LX

2005 KIA Sedona

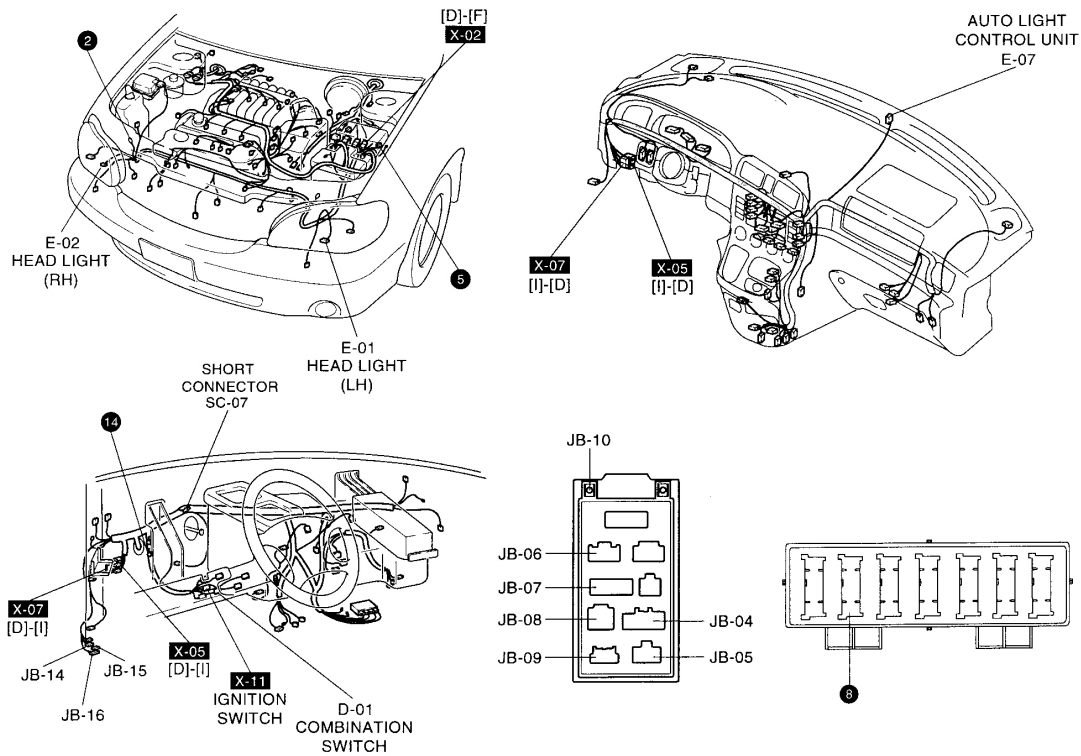


G00366249

**Fig. 19: Headlights**  
Courtesy of KIA MOTORS AMERICA, INC.

## 2005 Kia Sedona LX

2005 KIA Sedona



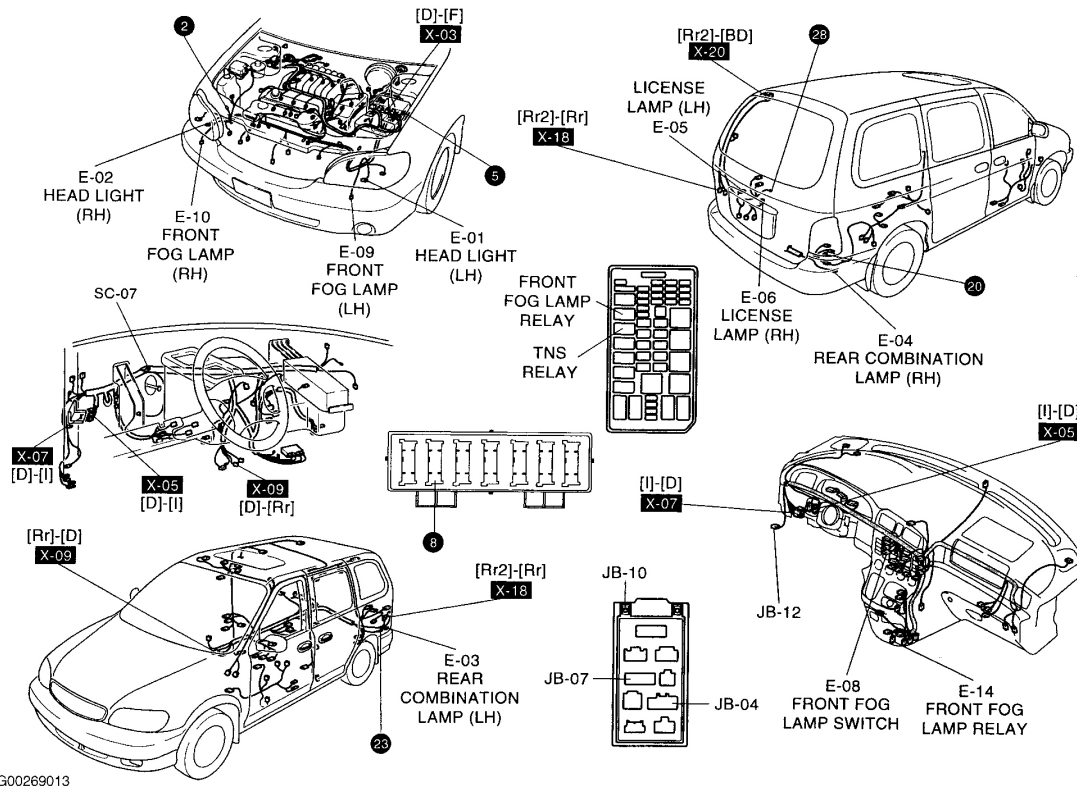
G00269012

**Fig. 20: Headlights (Auto Light)**  
Courtesy of KIA MOTORS AMERICA, INC.



## 2005 Kia Sedona LX

2005 KIA Sedona

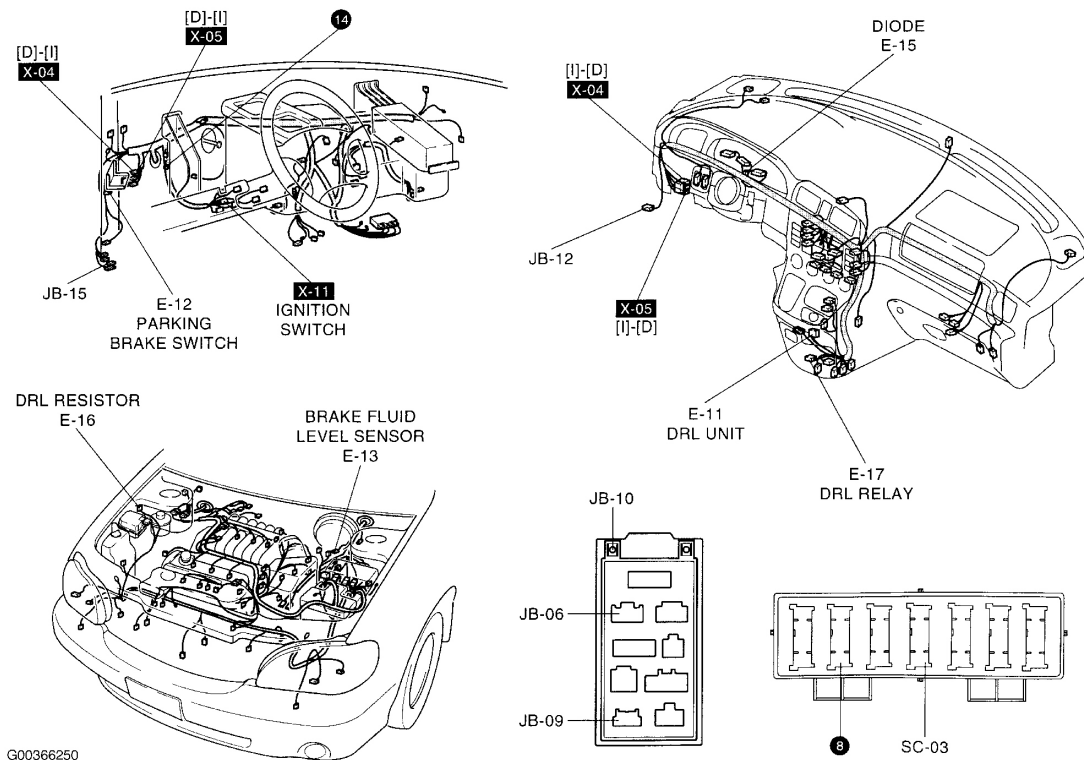


G00269013

**Fig. 21: Tail, Position, License & Front Fog Lamps**  
 Courtesy of KIA MOTORS AMERICA, INC.

## 2005 Kia Sedona LX

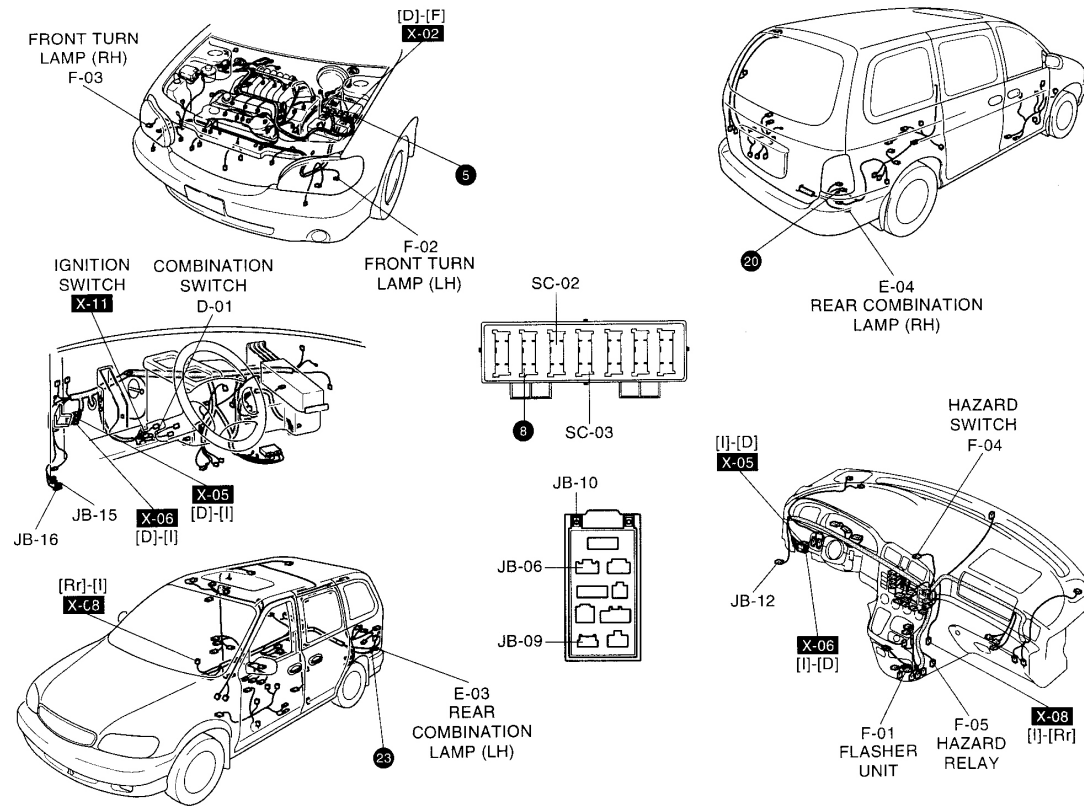
2005 KIA Sedona



**Fig. 22: Daytime Running Lamps**  
Courtesy of KIA MOTORS AMERICA, INC.

## 2005 Kia Sedona LX

2005 KIA Sedona

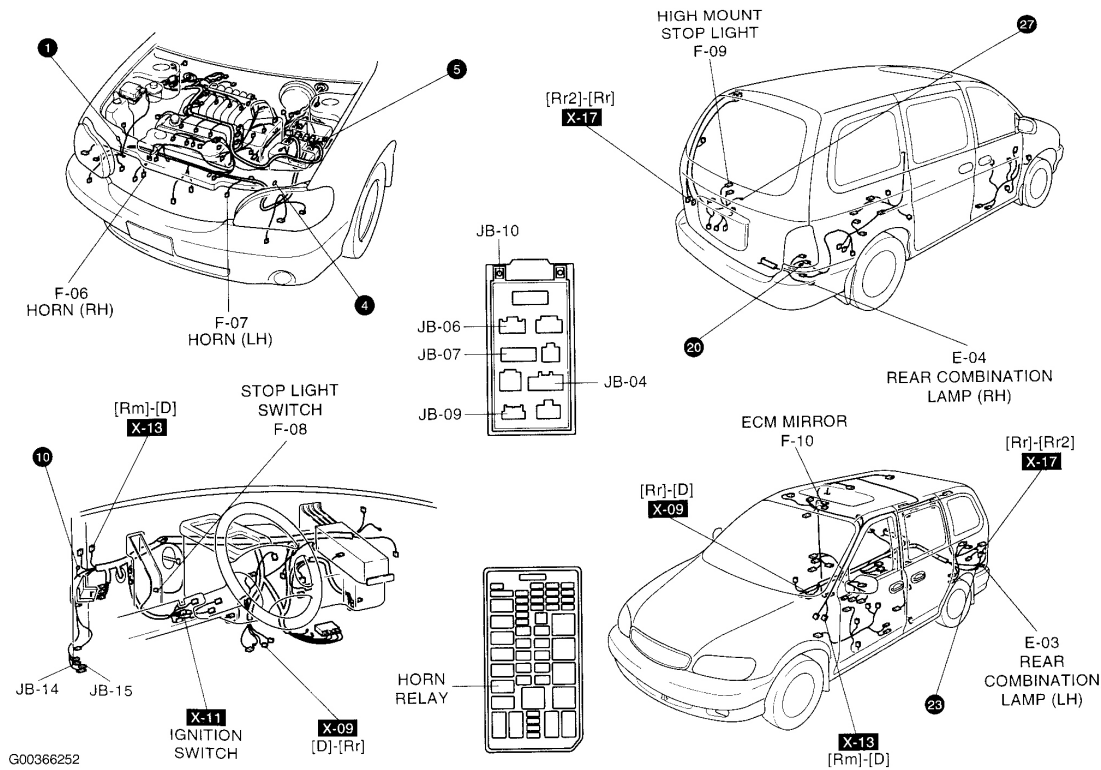


G00366251

**Fig. 23: Turn & Hazard Flasher Unit**  
Courtesy of KIA MOTORS AMERICA, INC.

## 2005 Kia Sedona LX

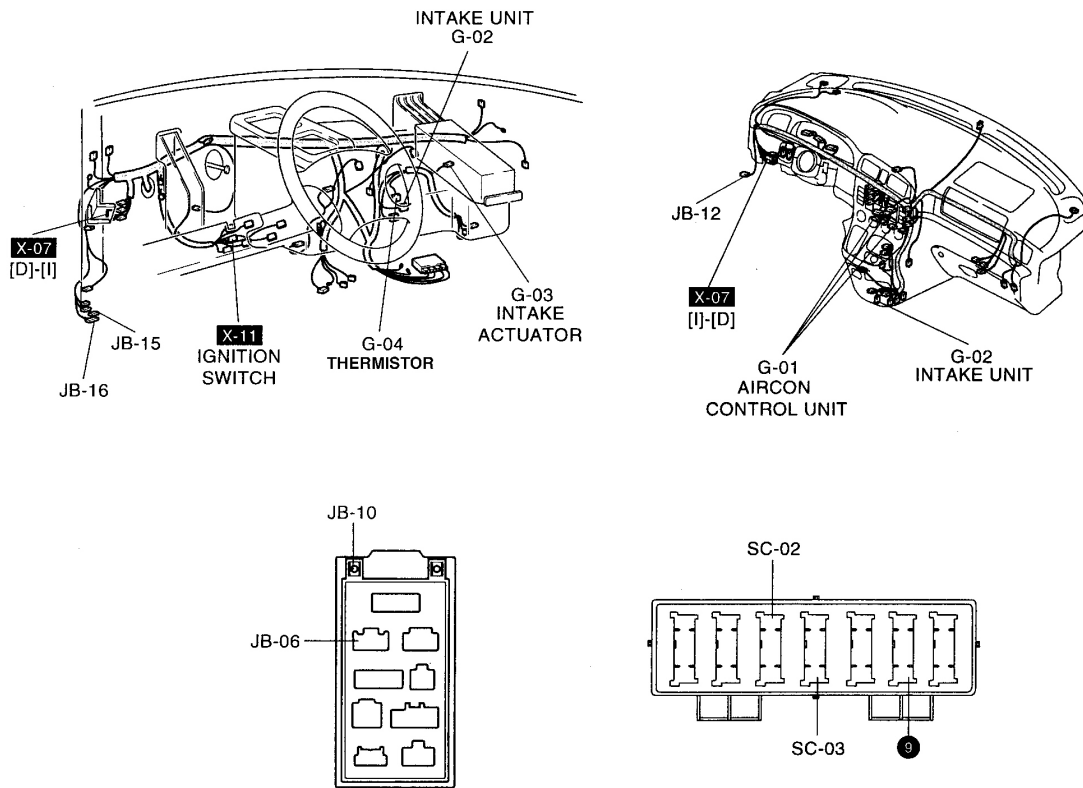
2005 KIA Sedona



**Fig. 24: Horn**  
Courtesy of KIA MOTORS AMERICA, INC.

## 2005 Kia Sedona LX

2005 KIA Sedona

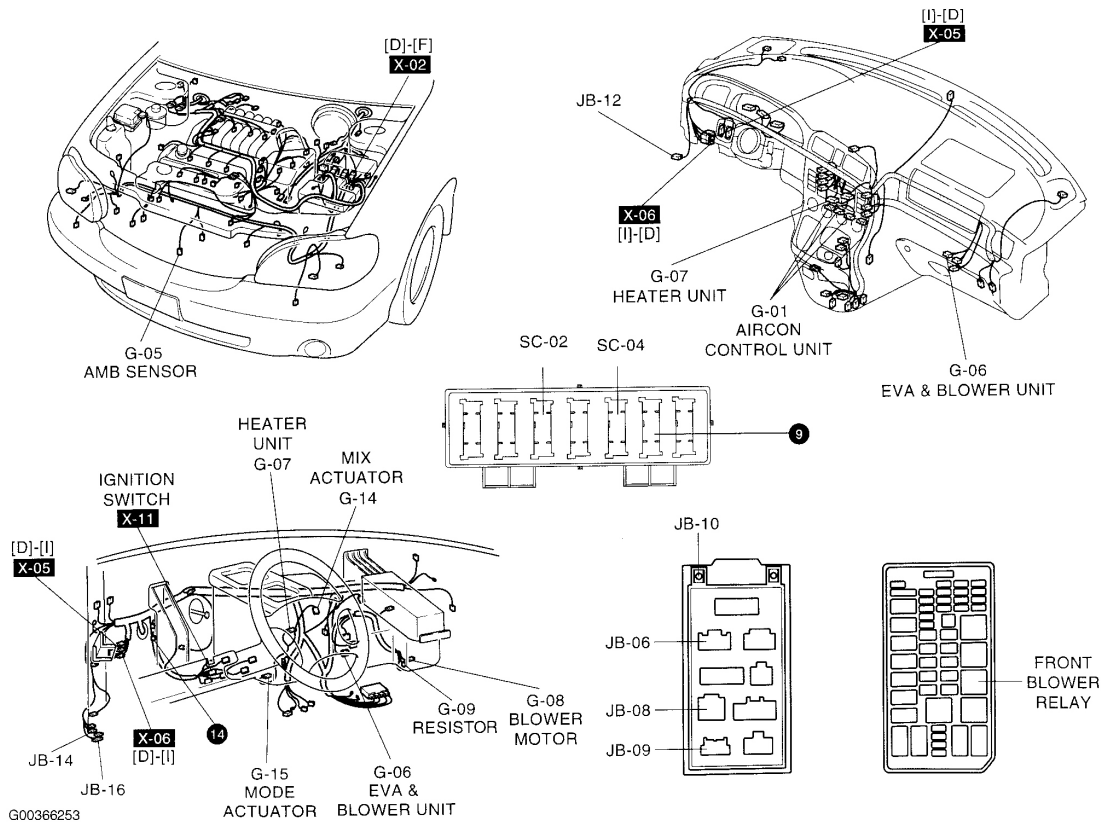


G00269017

**Fig. 25: Front Heater & A/C System**  
Courtesy of KIA MOTORS AMERICA, INC.

# 2005 Kia Sedona LX

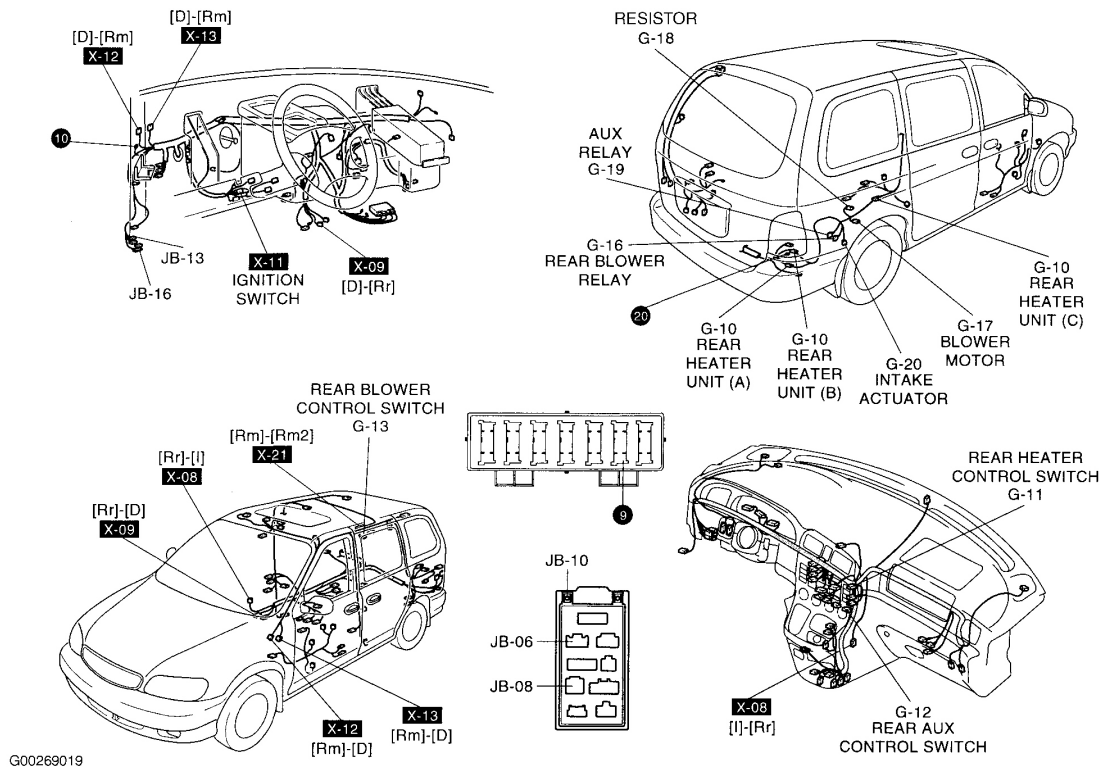
2005 KIA Sedona



**Fig. 26: Front Heater & A/C System**  
 Courtesy of KIA MOTORS AMERICA, INC.

## 2005 Kia Sedona LX

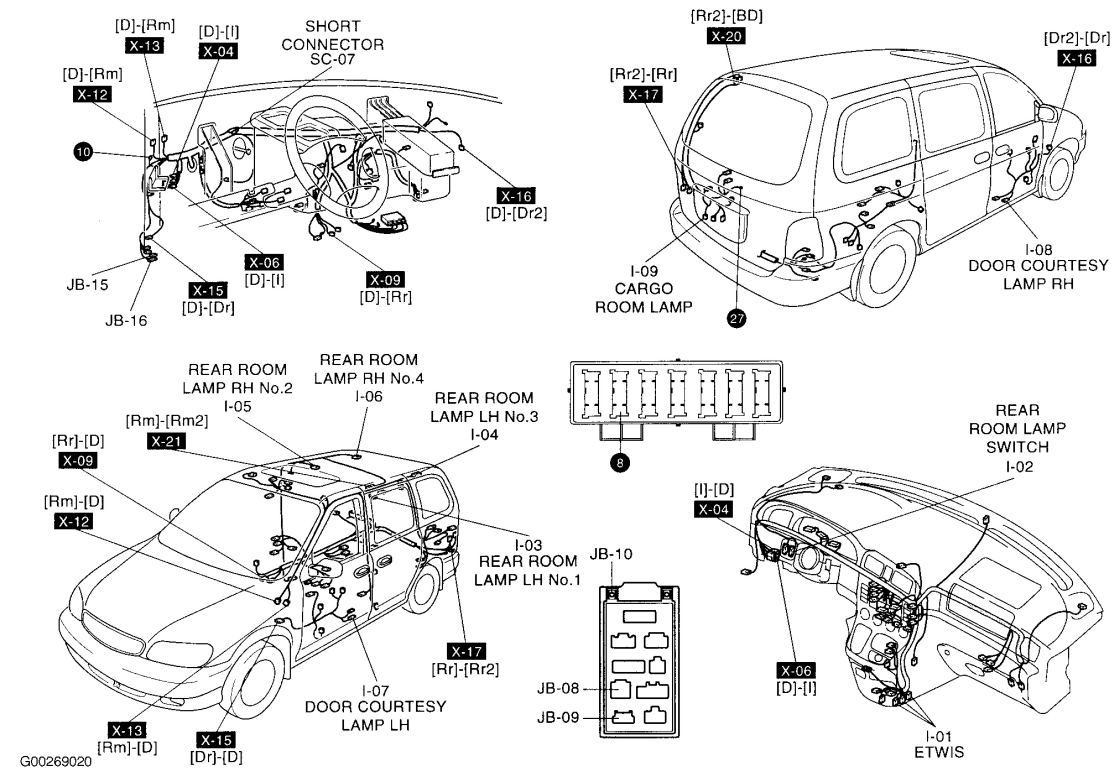
2005 KIA Sedona



**Fig. 27: Rear Heater & A/C System**  
Courtesy of KIA MOTORS AMERICA, INC.

2005 Kia Sedona LX
2005 KIA Sedona

2005 KIA Sedona
-----------------



**Fig. 28: ETWIS, Rear & Cargo Lamps**  
**Courtesy of KIA MOTORS AMERICA, INC.**



<b>2005 Kia Sedona LX</b>
2005 KIA Sedona

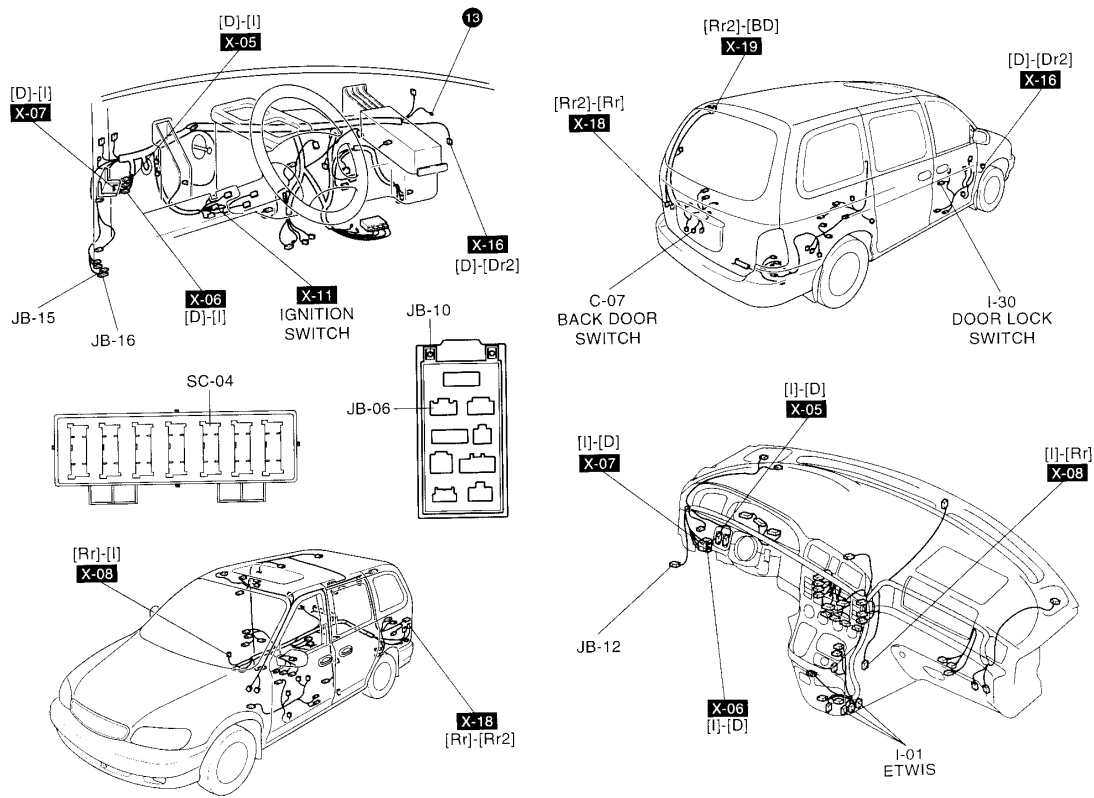
2005 KIA Sedona
-----------------



**Fig. 29: Keyless Entry System**  
**Courtesy of KIA MOTORS AMERICA, INC.**

## 2005 Kia Sedona LX

2005 KIA Sedona

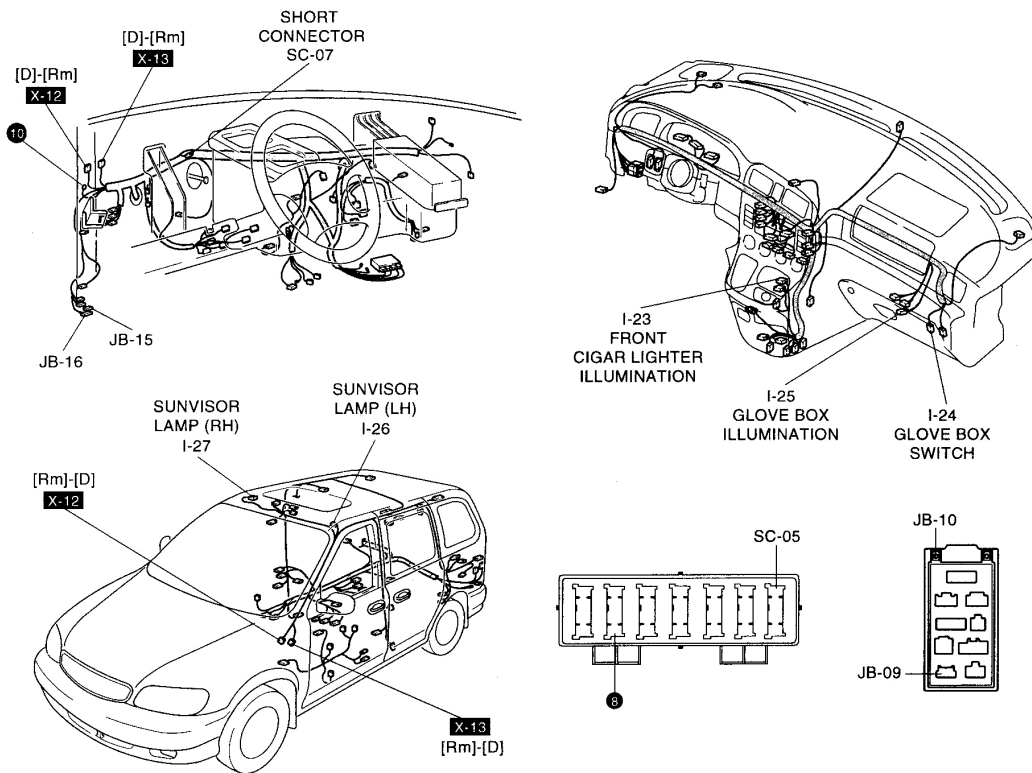


G00366254

**Fig. 30: ETWIS**  
Courtesy of KIA MOTORS AMERICA, INC.

## 2005 Kia Sedona LX

2005 KIA Sedona



G00269024

**Fig. 31: Sunvisor Lamps**  
Courtesy of KIA MOTORS AMERICA, INC.

2005 Kia Sedona LX
2005 KIA Sedona

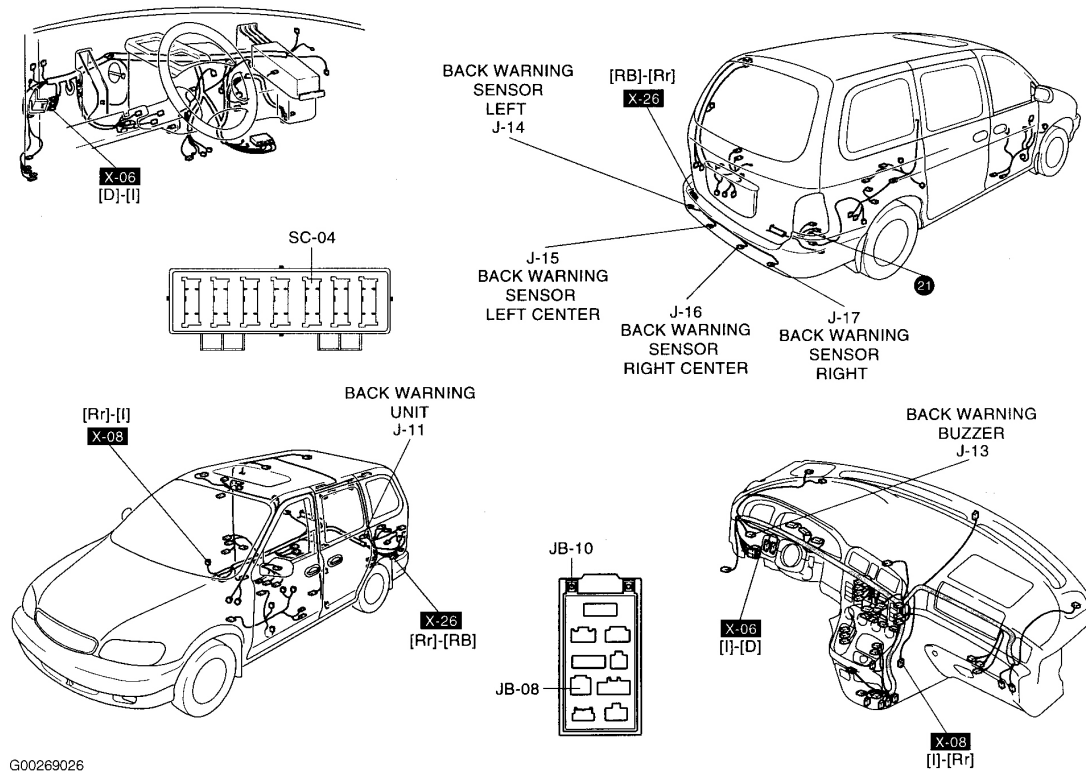
2005 KIA Sedona
-----------------



**Fig. 32: Audio System**  
Courtesy of KIA MOTORS AMERICA, INC.

## 2005 Kia Sedona LX

2005 KIA Sedona

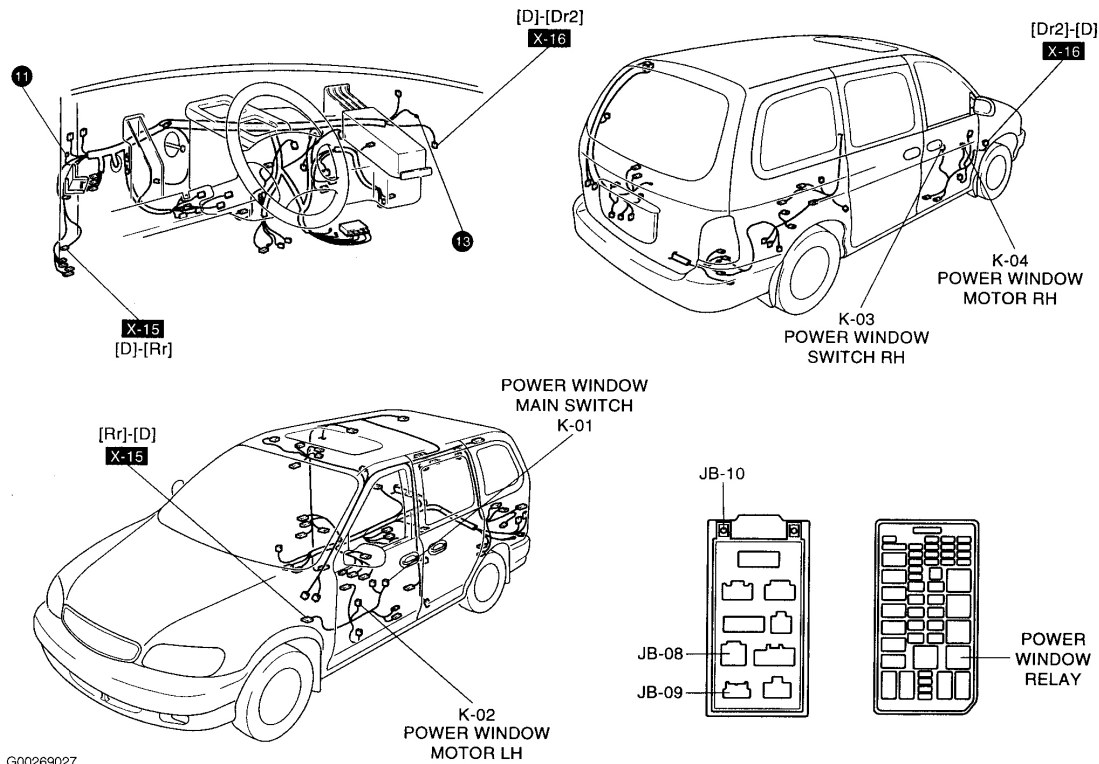


G00269026

**Fig. 33: Back-Up Warning System**  
Courtesy of KIA MOTORS AMERICA, INC.

## 2005 Kia Sedona LX

2005 KIA Sedona

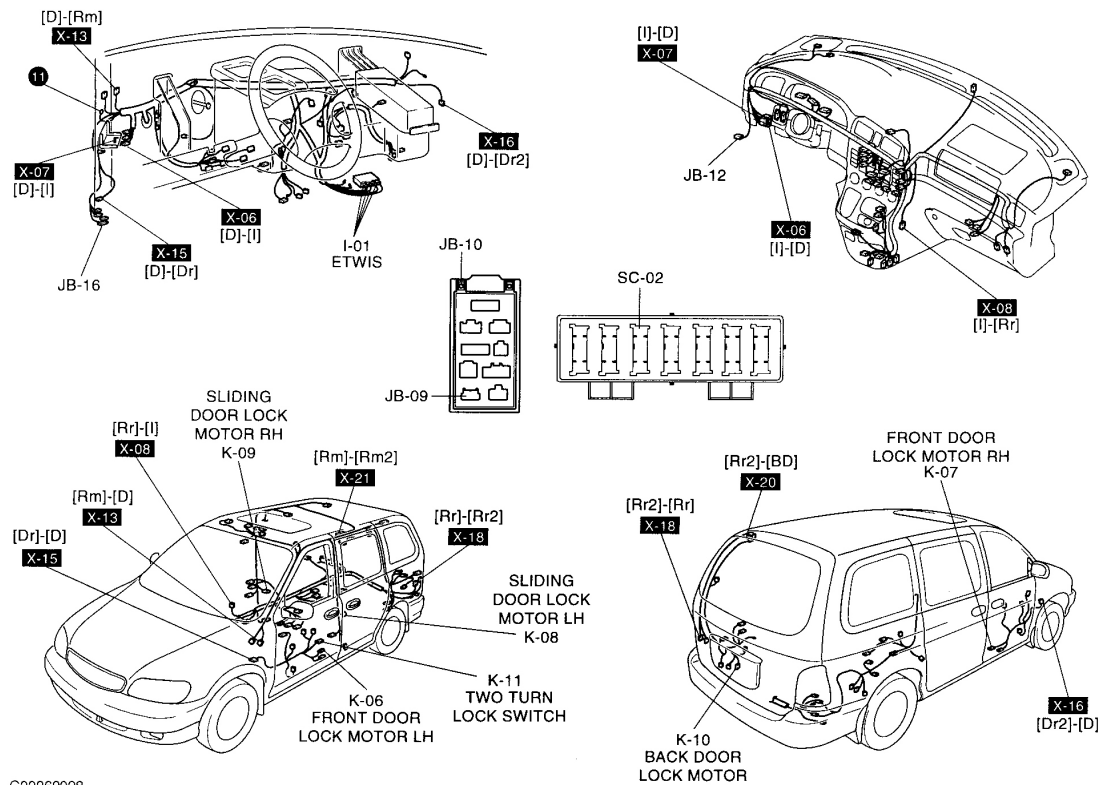


G00269027

**Fig. 34: Power Window System**  
Courtesy of KIA MOTORS AMERICA, INC.

## 2005 Kia Sedona LX

2005 KIA Sedona

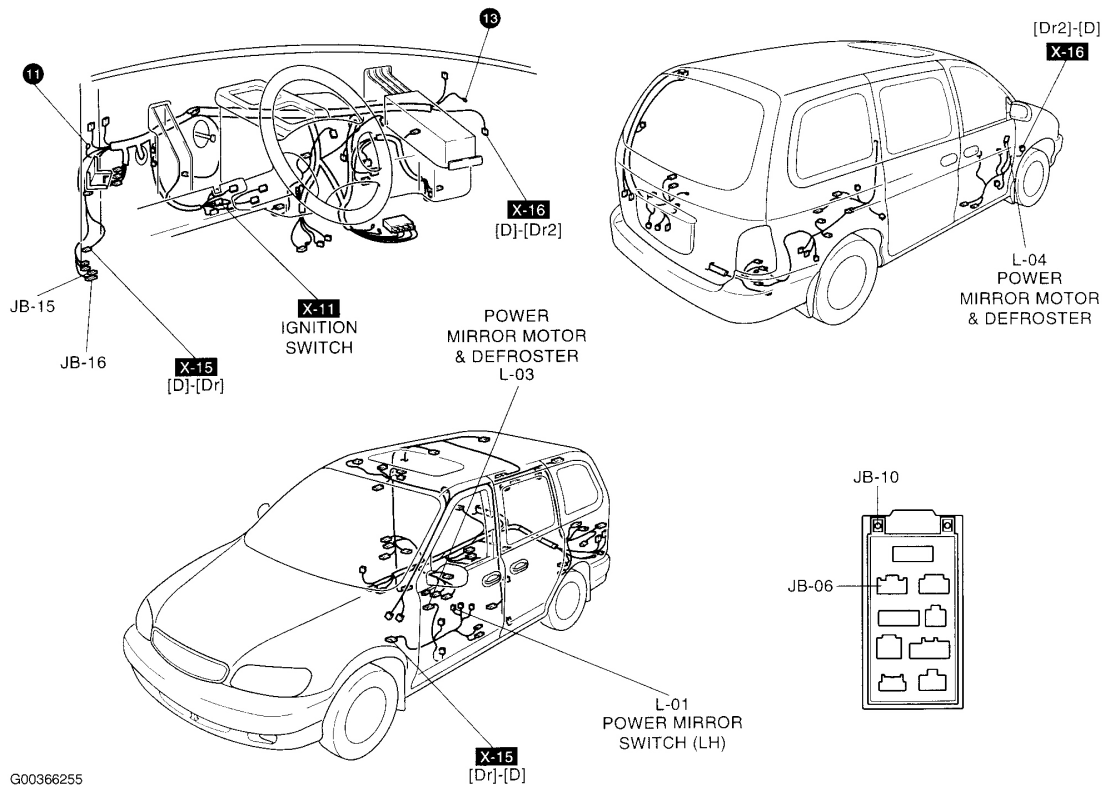


G00269028

**Fig. 35: Power Door Lock System**  
Courtesy of KIA MOTORS AMERICA, INC.

## 2005 Kia Sedona LX

2005 KIA Sedona



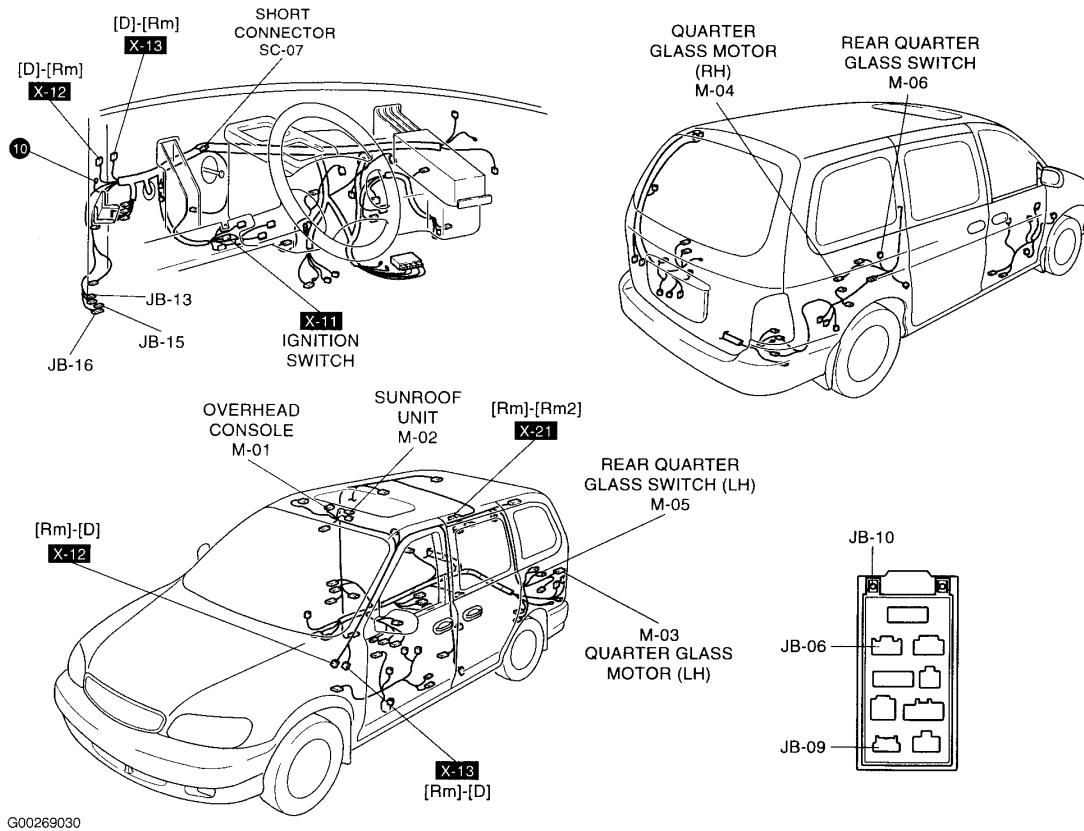
G00366255

**Fig. 36: Power Mirror System**  
Courtesy of KIA MOTORS AMERICA, INC.



## 2005 Kia Sedona LX

2005 KIA Sedona

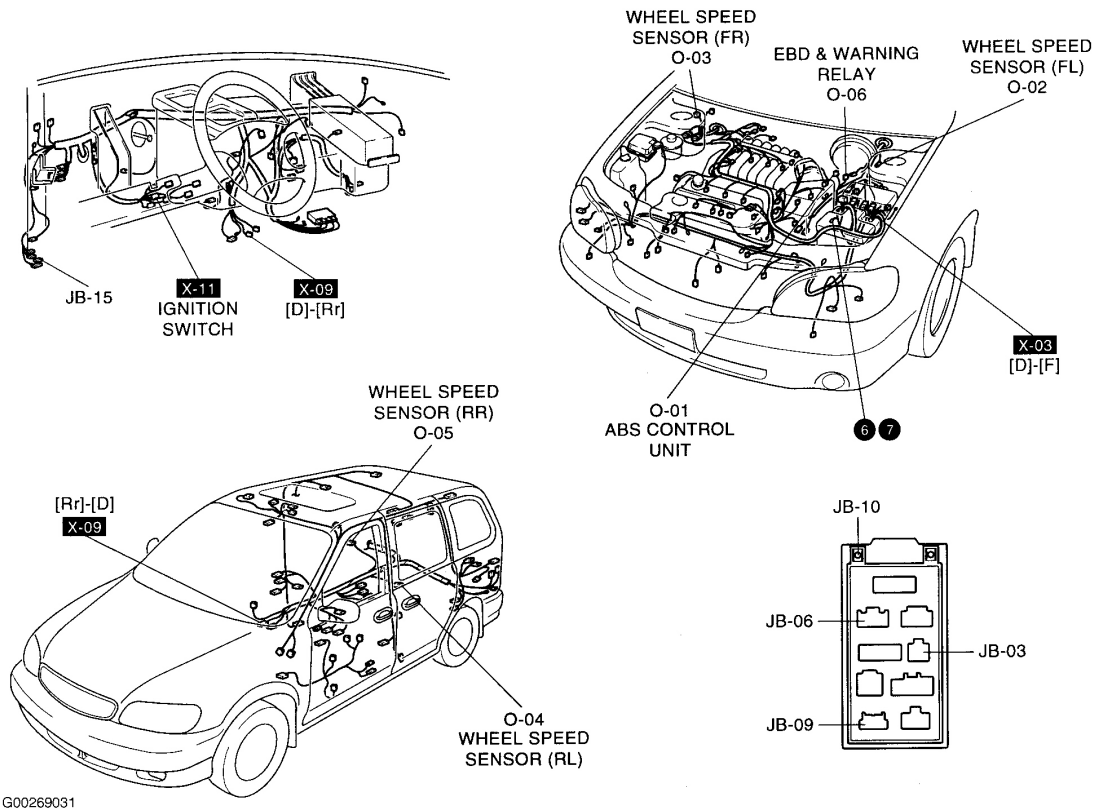


G00269030

**Fig. 37: Sunroof**  
Courtesy of KIA MOTORS AMERICA, INC.

## 2005 Kia Sedona LX

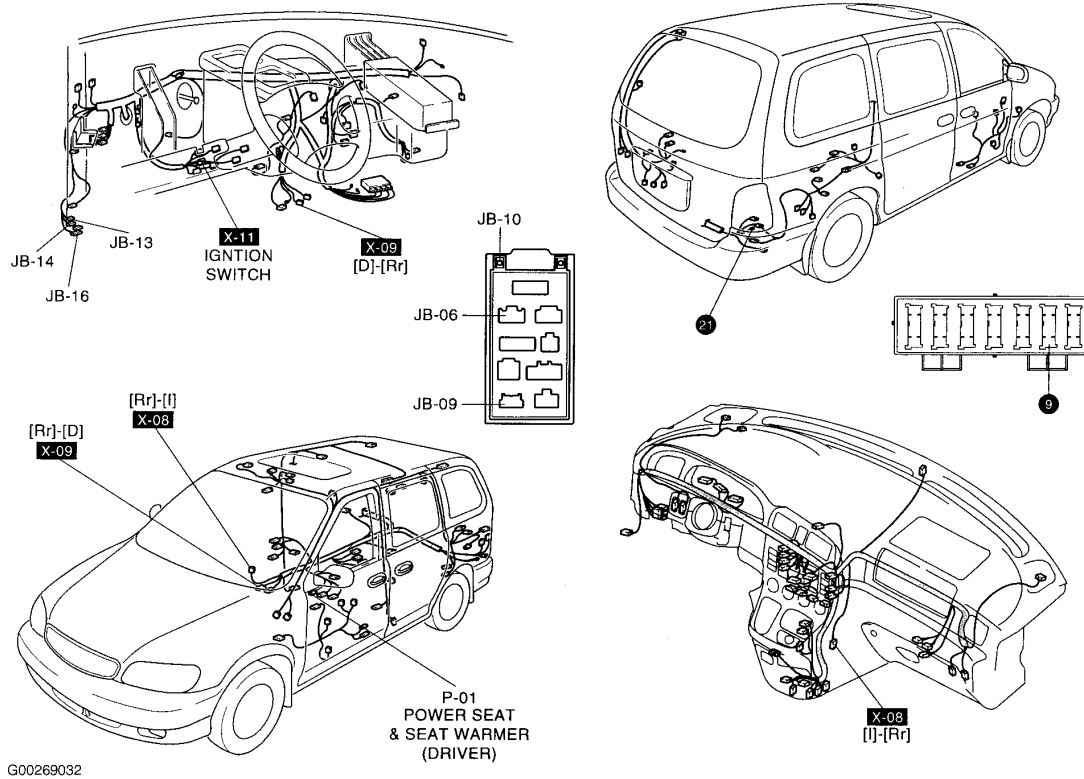
2005 KIA Sedona



**Fig. 38: Anti-Lock Brake System**  
Courtesy of KIA MOTORS AMERICA, INC.

## 2005 Kia Sedona LX

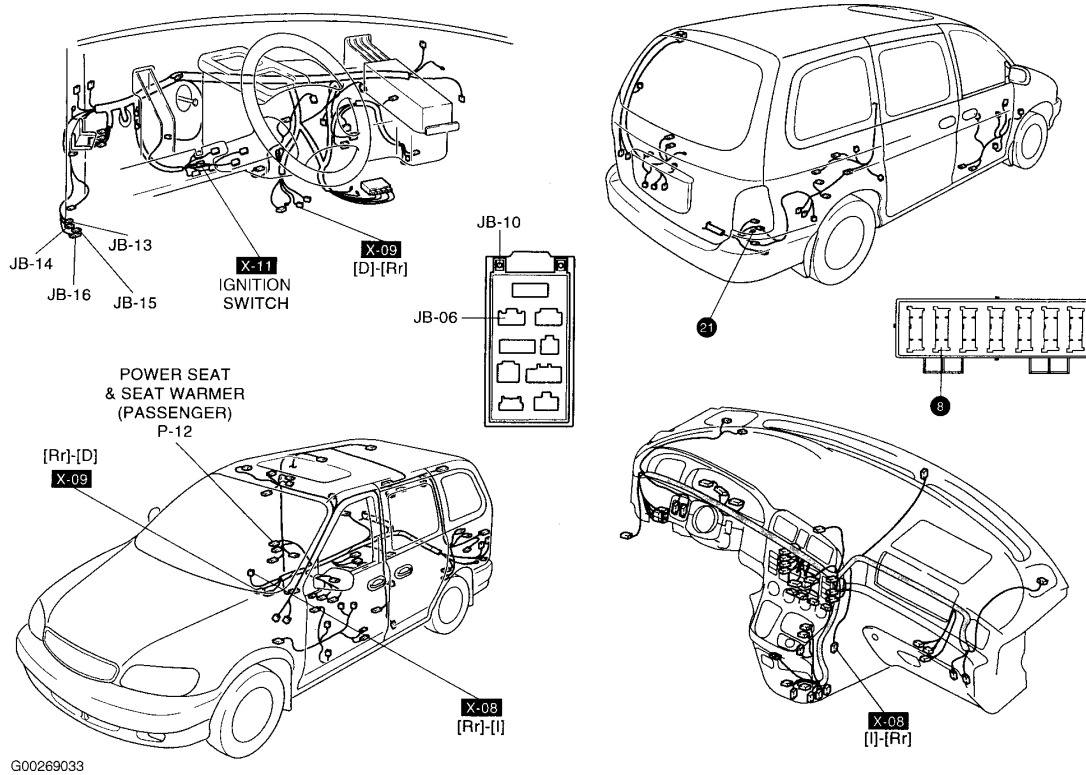
2005 KIA Sedona



**Fig. 39: Power Seat (Driver's)**  
Courtesy of KIA MOTORS AMERICA, INC.

## 2005 Kia Sedona LX

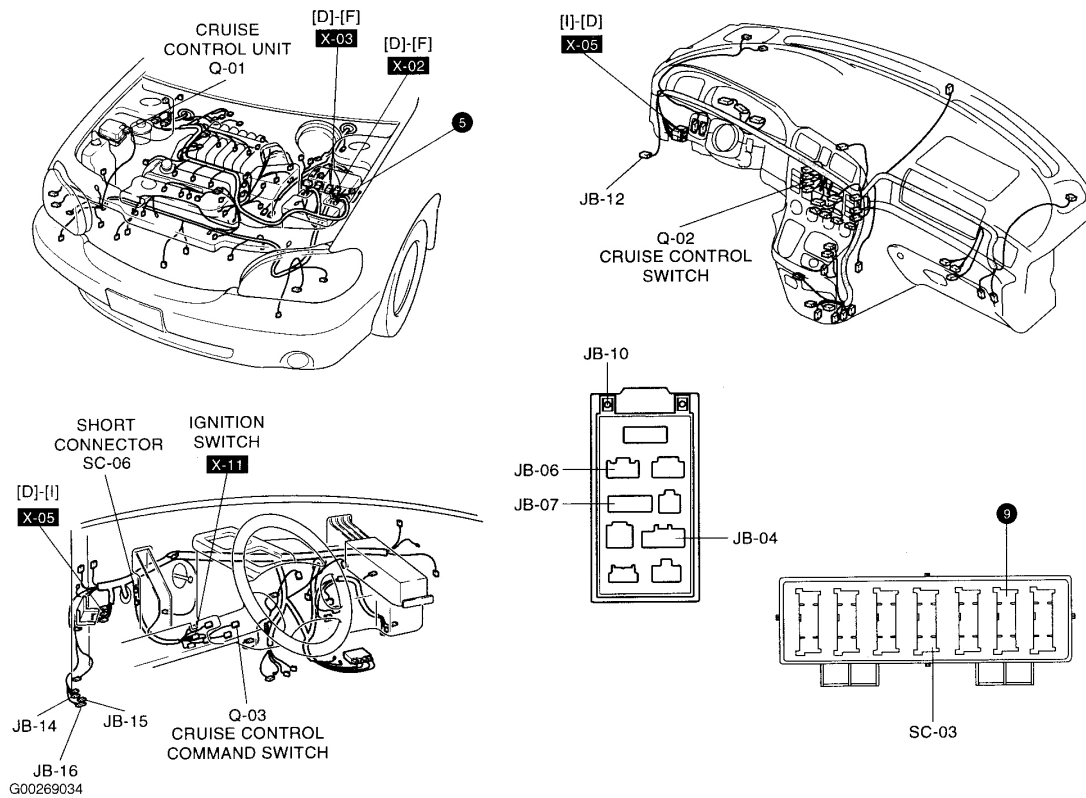
2005 KIA Sedona



**Fig. 40: Power Seat (Passenger's)**  
Courtesy of KIA MOTORS AMERICA, INC.

## 2005 Kia Sedona LX

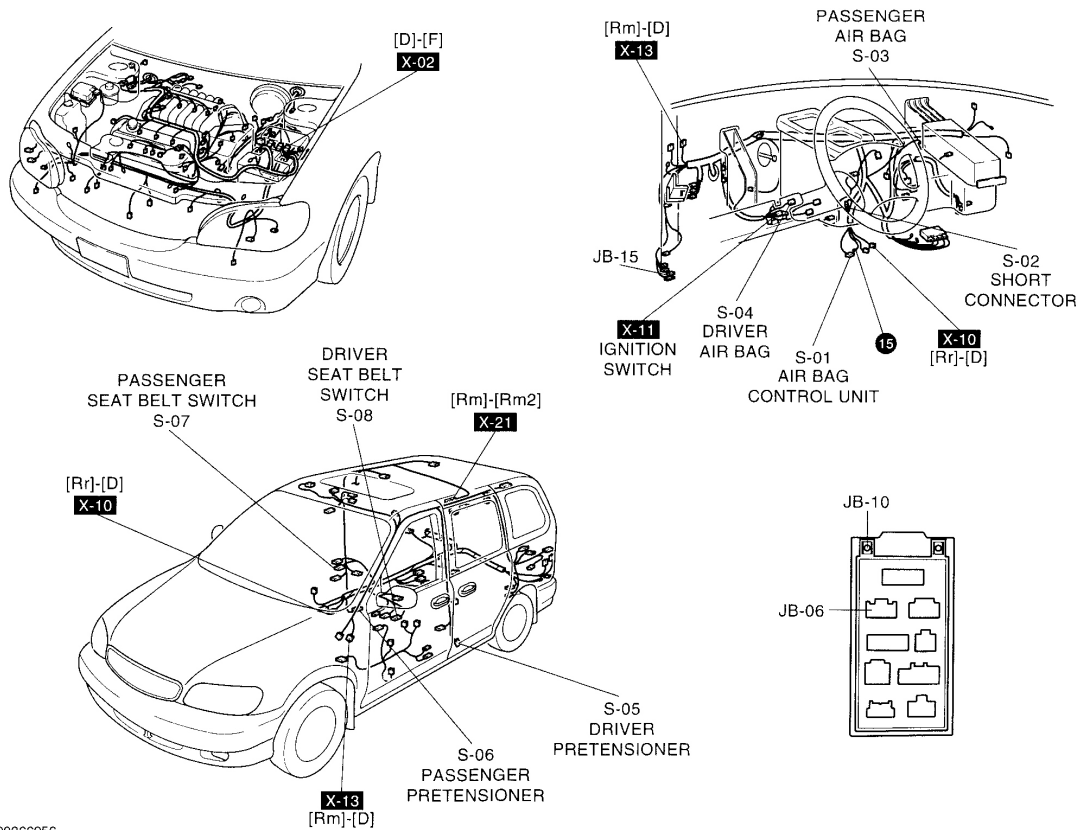
2005 KIA Sedona



**Fig. 41: Cruise Control System**  
Courtesy of KIA MOTORS AMERICA, INC.

## 2005 Kia Sedona LX

2005 KIA Sedona



G00366256

**Fig. 42: Airbag System**  
**Courtesy of KIA MOTORS AMERICA, INC.**

<b>2005 Kia Sedona LX</b>
2005 KIA Sedona

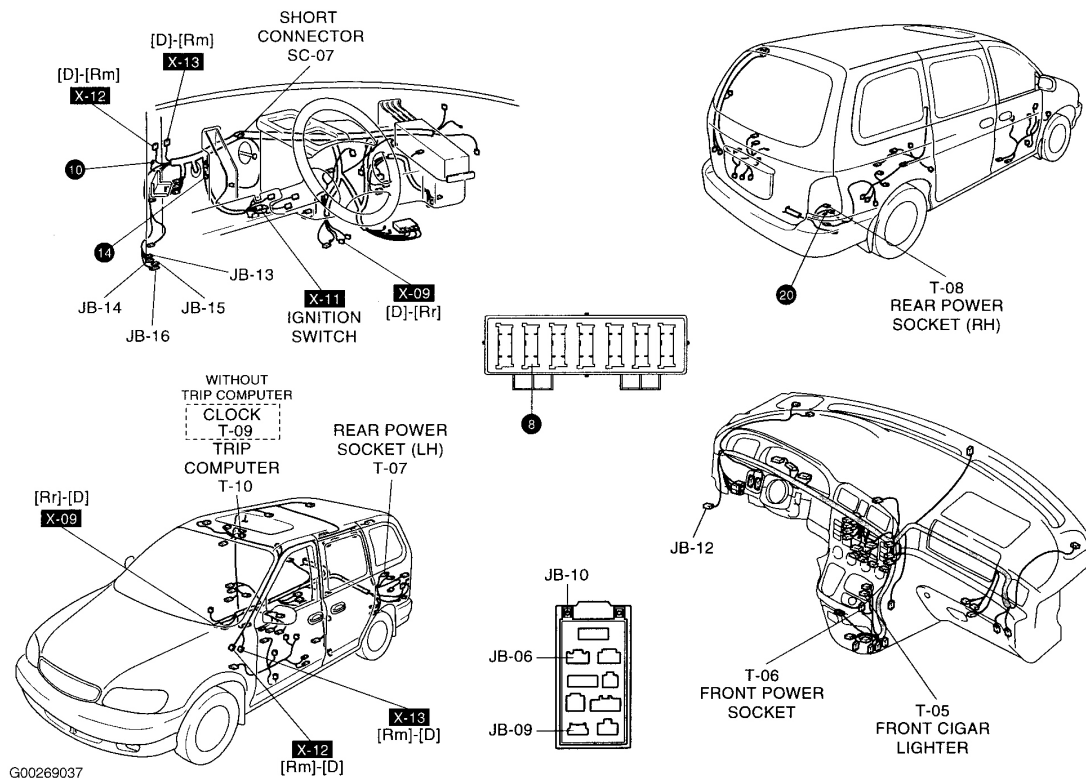
2005 KIA Sedona
-----------------



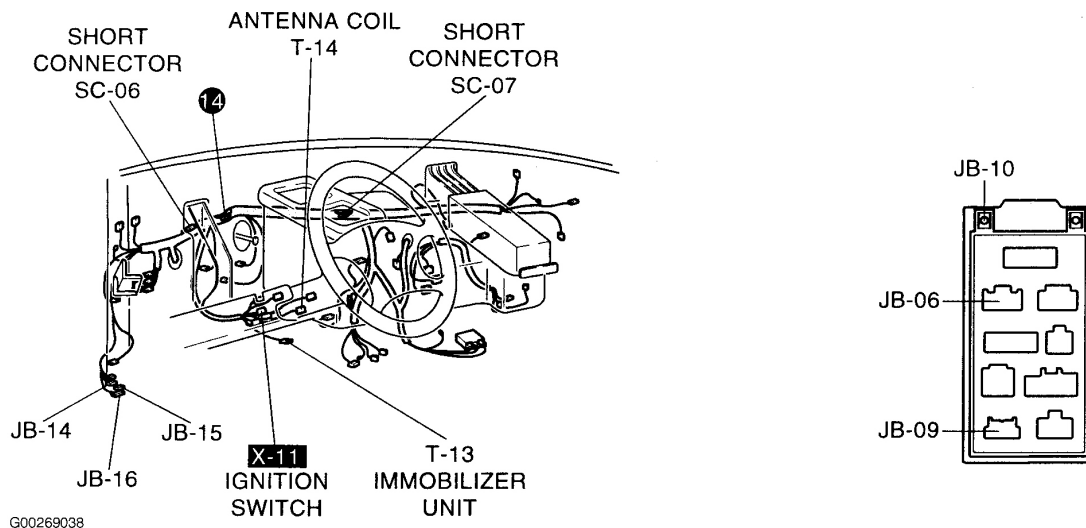
**Fig. 43: Fuel Lid Opener**  
Courtesy of KIA MOTORS AMERICA, INC.

## 2005 Kia Sedona LX

2005 KIA Sedona



**Fig. 44: Trip Computer**  
Courtesy of KIA MOTORS AMERICA, INC.

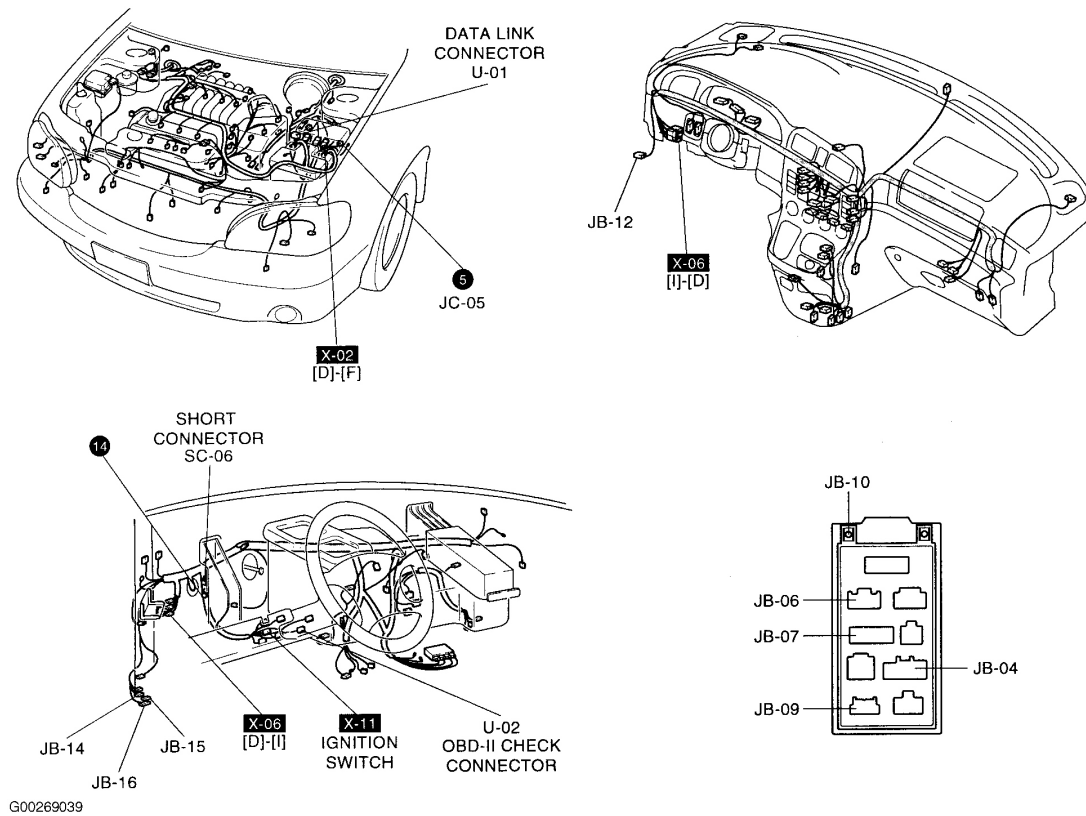


**Fig. 45: Immobilizer System**  
Courtesy of KIA MOTORS AMERICA, INC.



## 2005 Kia Sedona LX

2005 KIA Sedona



**Fig. 46: Data Link Connector**  
Courtesy of KIA MOTORS AMERICA, INC.